

ELMOD2 Polyclonal Antibody

Catalog number: 13027-1-AP

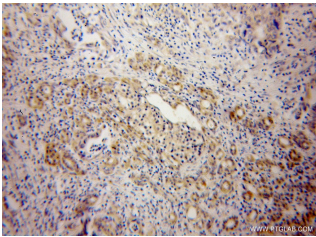
Size: 22 µg/150 µl

Source: Rabbit

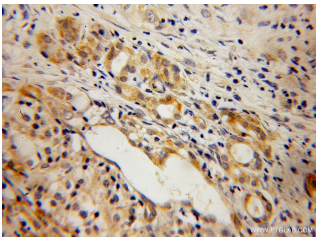
Isotype: IgG

Synonyms:

ELMOD2; 9830169G11Rik,
ELMOD2



Immunohistochemical of paraffin-embedded human pancreas cancer using 13027-1-AP (ELMOD2 antibody) at dilution of 1:100 (under 10x lens)



Immunohistochemical of paraffin-embedded human pancreas cancer using 13027-1-AP (ELMOD2 antibody) at dilution of 1:100 (under 40x lens)

Applications

Tested applications:	ELISA, WB, IHC, IP
Species specificity:	Human, Mouse, Rat; other species not tested.
Calculated ELMOD2 MW:	293aa, 32 kDa
Observed ELMOD2 MW:	32 kDa
Positive WB detected in:	A549 cells
Positive IP detected in:	A549 cells
Positive IHC detected in:	Human pancreas cancer tissue
Recommended dilution:	WB: 1:500-1:5000 IP: 1:200-1:1000 IHC: 1:20-1:200

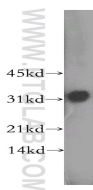
Application key: WB = Western blotting, IHC = Immunohistochemistry, IF = Immunofluorescence, IP = Immunoprecipitation

Immunogen information

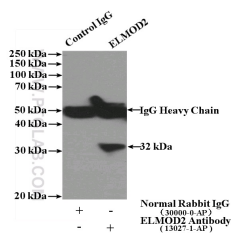
Immunogen:	Ag3653
GenBank accession number:	BC015168
Gene ID (NCBI):	255520
Full name:	ELMO/CED-12 domain containing 2

Product information

Purification method:	Antigen affinity purification
Storage:	PBS with 0.02% sodium azide and 50% glycerol pH 7.3. Store at -20°C.



A549 cells were subjected to SDS PAGE followed by western blot with 13027-1-AP (ELMOD2 antibody) at dilution of 1:400



IP Result of anti-ELMOD2

(IP:13027-1-AP, 4µg;

Detection:13027-1-AP 1:400)

with A549 cells lysate 1040ug.