

SFRS14 Polyclonal Antibody

Catalog number: 12514-1-AP

Size: 67 µg/150 µl

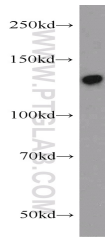
Source: Rabbit

Isotype: IgG

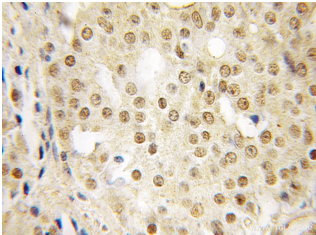
Synonyms:

SFRS14; DKFZp686M2322;

DKFZp779L2418; FLJ21855



mouse testis tissue were subjected to SDS PAGE followed by western blot with 12514-1-AP(SFRS14 Antibody) at dilution of 1:500



Immunohistochemistry of paraffin-embedded human prostate cancer using 12514-1-AP(SFRS14 Antibody) at Dilution 1:50 (under 10x lens)

Applications

Tested applications:	ELISA, WB, IHC
Species specificity:	Human, mouse, rat; other species not tested.
Positive WB detected in:	Mouse testis tissue
Calculated SFRS14 MW:	988aa,120kd
Observed SFRS14 MW:	120-130kd
Positive IHC detected in:	Human prostate cancer
Recommended dilution:	WB: 1:200-1:2000 IHC: 1:20-1:200

Application key: WB = Western blotting, IHC = Immunohistochemistry, IF = Immunofluorescence, IP = Immunoprecipitation, FC = Flow cytometry

Immunogen information

Immunogen:	Ag3195
GenBank accession number:	BC020586
Gene ID (NCBI):	10147
Full name:	Splicing factor, arginine/serine-rich 14

Product information

Purification method:	Antigen affinity purification
Storage:	PBS with 0.1% sodium azide and 50% glycerol pH 7.3. Store at -20°C.