

BAP31 Polyclonal Antibody

Catalog number: 11200-1-AP

Size: 36 µg/150 µl

Source: Rabbit

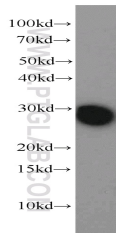
Isotype: IgG

Synonyms:

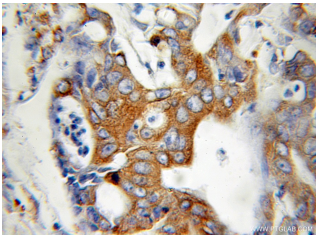
BCAP31; 6C6 AG, BAP31,

BCAP31, CDM, DXS1357E, p28,

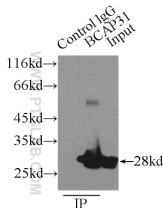
Protein CDM



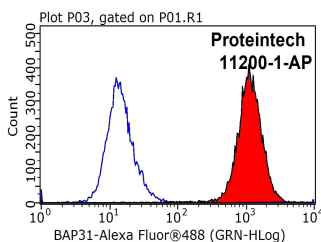
HEK-293 cells were subjected to SDS PAGE followed by western blot with 11200-1-AP(BCAP31 antibody) at dilution of 1:2000



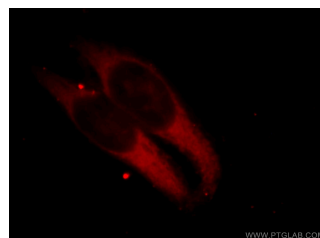
Immunohistochemical of paraffin-embedded human colon cancer using 11200-1-AP(BCAP31 antibody) at dilution of 1:100 (under 10x lens)



IP Result of anti-BCAP31 (IP:11200-1-AP, 3µg; Detection:11200-1-AP 1:1000) with A431 cells lysate 3300µg.



1X10⁶ HeLa cells were stained with 0.2µg BCAP31 antibody (11200-1-AP, red)



Immunofluorescent analysis of HeLa cells, using BCAP31 antibody 11200-1-AP at 1:25

Background

BAP31 is a chaperone protein that is abundant in the endoplasmic reticulum (ER). BAP31 plays a role in the export of secreted proteins in the ER, the recognition of abnormally folded protein and their targeting to the ER associated-degradation (ERAD). It also serves as a cargo receptor for the export of transmembrane proteins. BAP31 may be involved in apoptosis.

Applications

Tested applications:	ELISA, IHC, IF, IP, FC, WB
Cited applications:	IP, WB
Species specificity:	Human, Mouse, Rat; other species not tested.
Cited species:	Human
Calculated BAP31 MW:	28 kDa
Observed BAP31 MW:	28 kDa
Positive WB detected in	HEK-293 cells, A431 cells, HeLa cells, human placenta tissue, mouse placenta tissue
Positive IP detected in	A431 cells
Positive IHC detected in	Human colon cancer tissue
Positive IF detected in	Hela cells
Positive FC detected in	HeLa cells
Recommended dilution:	WB: 1:1000-1:10000 IP: 1:500-1:5000 IHC: 1:20-1:200 IF: 1:10-1:100 FC: N/A

Application key: WB = Western blotting, IHC = Immunohistochemistry, IF = Immunofluorescence, IP = Immunoprecipitation

Immunogen information

Immunogen:	Ag1668
GenBank accession number:	BC014323
Gene ID (NCBI):	10134
Full name:	B-cell receptor-associated protein 31

Product information

Purification method:	Antigen affinity purification
Storage:	PBS with 0.1% sodium azide and 50% glycerol pH 7.3. Store at -20°C.

and control antibody (blue). Fixed with 90% MeOH blocked with 3% BSA (30 min). Alexa Fluor 488-conjugated AffiniPure Goat Anti-Rabbit IgG(H+L) with dilution 1:1000. dilution and Rhodamine-labeled goat anti-rabbit IgG (red).