

## ARHGAP1 Polyclonal Antibody

Catalog number: 11169-1-AP

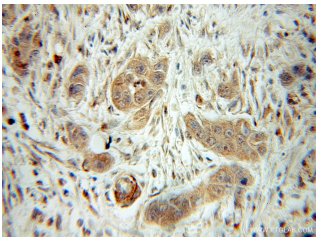
Size: 26 µg/150 µl

Source: Rabbit

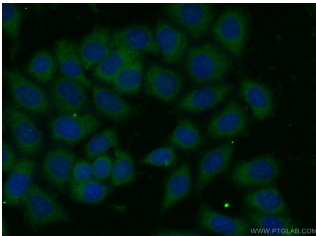
Isotype: IgG

Synonyms:

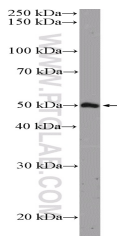
ARHGAP1; ARHGAP1,  
CDC42GAP, p50 RhoGAP,  
p50rhoGAP, RHOGAP,  
RHOGAP1



Immunohistochemical of paraffin-embedded human pancreas cancer using 11169-1-AP (ARHGAP1 antibody) at dilution of 1:50 (under 10x lens)



Immunofluorescent analysis of ( -20 Ethanol ) fixed HeLa cells using 11169-1-AP ( ARHGAP1 Antibody ) at dilution of 1:100 and Alexa Fluor 488-conjugated AffiniPure Goat Anti-Rabbit IgG(H+L)



RAW 264.7 cells were subjected to SDS PAGE followed by western blot with 11169-1-AP ( ARHGAP1 Antibody ) at dilution of 1:600

### Applications

Tested applications:	ELISA, IHC, WB, IF
Species specificity:	Human, Rat; other species not tested.
Calculated ARHGAP1 MW:	50 kDa
Observed ARHGAP1 MW:	50 kDa
Positive WB detected in	RAW 264.7 cells, human duodenum tissue, human heart tissue, human pancreas tissue, PC-12 cells
Positive IHC detected in	Human pancreas cancer tissue
Positive IF detected in	HeLa cells
Recommended dilution:	WB: 1:200-1:2000 IHC: 1:20-1:200 IF: 1:20-1:200

Application key: WB = Western blotting, IHC = Immunohistochemistry, IF = Immunofluorescence, IP = Immunoprecipitation

### Immunogen information

Immunogen:	Ag1651
GenBank accession number:	BC018118
Gene ID (NCBI):	392
Full name:	Rho GTPase activating protein 1

### Product information

Purification method:	Antigen affinity purification
Storage:	PBS with 0.1% sodium azide and 50% glycerol pH 7.3. Store at -20°C.