

## DOCK8 Polyclonal Antibody

Catalog number: 11622-1-AP

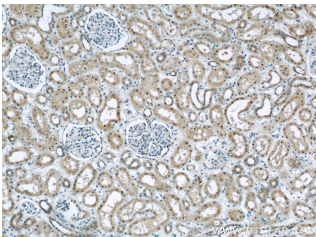
Size: 32 µg/150 µl

Source: Rabbit

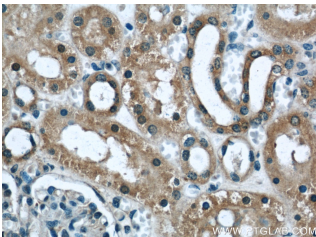
Isotype: IgG

Synonyms:

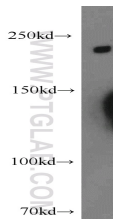
DOCK8; dedicator of cytokinesis 8, DOCK8, FLJ00026, FLJ00152, FLJ00346, MRD2, ZIR8



Immunohistochemical of paraffin-embedded human kidney using 11622-1-AP(DOCK8 antibody) at dilution of 1:50 (under 10x lens)



Immunohistochemical of paraffin-embedded human kidney using 11622-1-AP(DOCK8 antibody) at dilution of 1:50 (under 40x lens)



A549 cells were subjected to SDS PAGE followed by western blot with 11622-1-AP(DOCK8 antibody) at dilution of 1:800

### Applications

Tested applications:	ELISA, WB, IHC
Species specificity:	Human, Mouse, Rat; other species not tested.
Calculated DOCK8 MW:	2031aa, 231 kDa
Observed DOCK8 MW:	230-239 kDa
Positive WB detected in	A549 cells, mouse lung tissue, Raji cells
Positive IHC detected in	Human kidney tissue, human heart tissue, mouse kidney tissue, mouse lung tissue
Recommended dilution:	WB: 1:200-1:2000 IHC: 1:20-1:200

Application key: WB = Western blotting, IHC = Immunohistochemistry, IF = Immunofluorescence, IP = Immunoprecipitation

### Immunogen information

Immunogen:	Ag2040
GenBank accession number:	BC019102
Gene ID (NCBI):	81704
Full name:	Dedicator of cytokinesis 8

### Product information

Purification method:	Antigen affinity purification
Storage:	PBS with 0.1% sodium azide and 50% glycerol pH 7.3. Store at -20°C.