

MTMR6 Polyclonal Antibody

Catalog number: 13684-1-AP

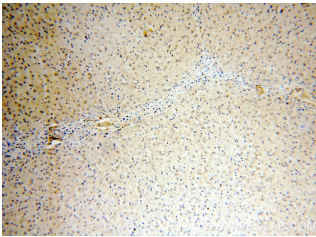
Size: 45 µg/150 µl

Source: Rabbit

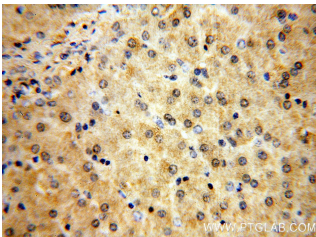
Isotype: IgG

Synonyms:

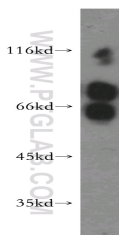
MTMR6; MTMR6,
myotubularin related protein 6



Immunohistochemical of paraffin-embedded human liver using 13684-1-AP(MTMR6 antibody) at dilution of 1:100 (under 10x lens)



Immunohistochemical of paraffin-embedded human liver using 13684-1-AP(MTMR6 antibody) at dilution of 1:100 (under 40x lens)



human heart tissue were subjected to SDS PAGE followed by western blot with 13684-1-AP(MTMR6 antibody) at dilution of 1:500

Applications

Tested applications:	ELISA, WB, IHC
Species specificity:	Human, Mouse, Rat; other species not tested.
Calculated MTMR6 MW:	621aa, 72 kDa
Observed MTMR6 MW:	64-67 kDa, 72-76 kDa
Positive WB detected in	Human heart tissue, mouse heart tissue
Positive IHC detected in	Human liver tissue
Recommended dilution:	WB: 1:500-1:5000 IHC: 1:20-1:200

Application key: WB = Western blotting, IHC = Immunohistochemistry, IF = Immunofluorescence, IP = Immunoprecipitation

Immunogen information

Immunogen:	Ag4551
GenBank accession number:	BC040012
Gene ID (NCBI):	9107
Full name:	Myotubularin related protein 6

Product information

Purification method:	Antigen affinity purification
Storage:	PBS with 0.02% sodium azide and 50% glycerol pH 7.3. Store at -20°C.