

LMAN1 Polyclonal Antibody

Catalog number: 13364-1-AP

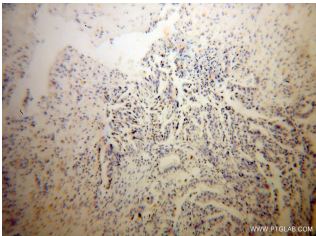
Size: 40 µg/150 µl

Source: Rabbit

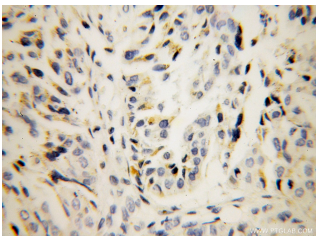
Isotype: IgG

Synonyms:

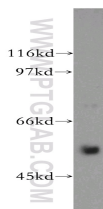
LMAN1; ERGIC 53, ERGIC53, F5F8D, FMFD1, gp58, Lectin mannose binding 1, lectin, mannose binding, 1, LMAN1, MCFD1, MR60, Protein ERGIC 53



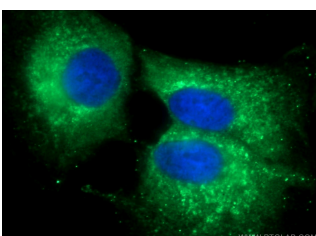
Immunohistochemical of paraffin-embedded human stomach cancer using 13364-1-AP(LMAN1 antibody) at dilution of 1:100 (under 10x lens)



Immunohistochemical of paraffin-embedded human stomach cancer using 13364-1-AP(LMAN1 antibody) at dilution of 1:100 (under 40x lens)



human brain tissue were subjected to SDS PAGE followed by western blot with 13364-1-AP(LMAN1 antibody) at dilution of 1:400



Applications

Tested applications:	ELISA, WB, IHC, IP, IF
Species specificity:	Human, Mouse, Rat; other species not tested.
Calculated LMAN1 MW:	510aa, 54 kDa
Observed LMAN1 MW:	54 kDa
Positive WB detected in	Human brain tissue, HepG2 cells, MCF7 cells, mouse brain tissue
Positive IP detected in	HepG2 cells
Positive IHC detected in	Human stomach cancer tissue
Positive IF detected in	A549 cells
Recommended dilution:	WB: 1:500-1:5000 IP: 1:200-1:1000 IHC: 1:20-1:200 IF: 1:20-1:200

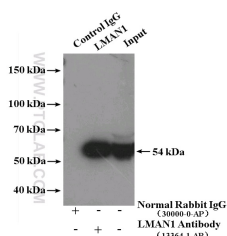
Application key: WB = Western blotting, IHC = Immunohistochemistry, IF = Immunofluorescence, IP = Immunoprecipitation

Immunogen information

Immunogen:	Ag4183
GenBank accession number:	BC032330
Gene ID (NCBI):	3998
Full name:	Lectin, mannose-binding, 1

Product information

Purification method:	Antigen affinity purification
Storage:	PBS with 0.02% sodium azide and 50% glycerol pH 7.3. Store at -20°C.



Immunofluorescent analysis of (-20 Ethanol) fixed A549 cells using 13364-1-AP (LMAN1 Antibody) at dilution of 1:50 and Alexa Fluor 488- conjugated AffiniPure Goat Anti-Rabbit IgG(H+L)

IP Result of anti-LMAN1 (IP:13364-1-AP, 4ug; Detection:13364-1-AP 1:400) with HepG2 cells lysate 1000ug.