

## NEK2 Polyclonal Antibody

Catalog number: 14233-1-AP

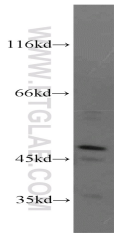
Size: 31 µg/150 µl

Source: Rabbit

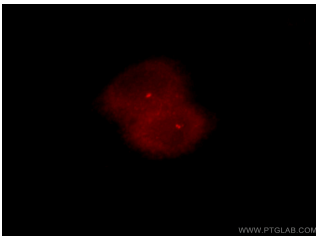
Isotype: IgG

Synonyms:

NEK2; HsPK21; NEK2A; NLK1



K-562 cells were subjected to SDS PAGE followed by western blot with 14233-1-AP(NEK2 Antibody) at dilution of 1:600



Immunofluorescent analysis of HeLa cells, using NEK2 antibody 14233-1-AP at 1:25 dilution and Rhodamine-labeled goat anti-rabbit IgG (red).

### Applications

Tested applications:	ELISA, WB, IF
Species specificity:	Human, mouse, rat; other species not tested.
Positive WB detected in:	K-562 cells
Calculated NEK2 MW:	52kd
Observed NEK2 MW:	48kd
Positive IF detected in:	Hela cells
Recommended dilution:	WB: 1:200-1:2000 IF: 1:20-1:50

Application key: WB = Western blotting, IHC = Immunohistochemistry, IF = Immunofluorescence, IP = Immunoprecipitation, FC = Flow cytometry

### Immunogen information

Immunogen:	Ag5474
GenBank accession number:	BC043502
Gene ID (NCBI):	4751
Full name:	NIMA (never in mitosis gene a)-related kinase 2

### Product information

Purification method:	Antigen affinity purification
Storage:	PBS with 0.02% sodium azide and 50% glycerol pH 7.3. Store at -20°C.