

## LPXN Polyclonal Antibody

Catalog number: 11307-1-AP

Size: 63 µg/150 µl

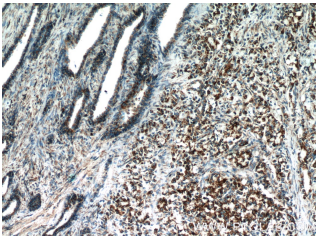
Source: Rabbit

Isotype: IgG

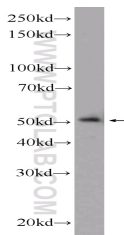
Synonyms:

LPXN; LDLP, LDPL, leupaxin,

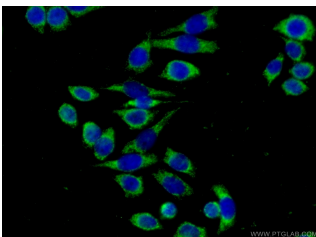
LPXN



Immunohistochemistry of paraffin-embedded human prostate cancer slide using 11307-1-AP( LPXN Antibody) at dilution of 1:50. (under 10x lens)



PC-3 cells were subjected to SDS PAGE followed by western blot with 11307-1-AP( LPXN Antibody) at dilution of 1:600



Immunofluorescent analysis of ( -20 Ethanol ) fixed PC-3 cells using 11307-1-AP( LPXN Antibody) at dilution of 1:50 and Alexa Fluor 488-conjugated AffiniPure Goat Anti-Rabbit IgG(H+L)

### Applications

Tested applications:	ELISA, WB, IHC, IF
Species specificity:	Human, Mouse, Rat; other species not tested.
Calculated LPXN MW:	43 kDa
Observed LPXN MW:	50-60 kDa
Positive WB detected in	PC-3 cells, RAW 264.7 cells
Positive IHC detected in	Human prostate cancer tissue, human lung cancer tissue, human tonsillitis tissue
Positive IF detected in	PC-3 cells
Recommended dilution:	WB: 1:200-1:2000 IHC: 1:20-1:200 IF: 1:20-1:200

Application key: WB = Western blotting, IHC = Immunohistochemistry, IF = Immunofluorescence, IP = Immunoprecipitation

### Immunogen information

Immunogen:	Ag1845
GenBank accession number:	BC019035
Gene ID (NCBI):	9404
Full name:	Leupaxin

### Product information

Purification method:	Antigen affinity purification
Storage:	PBS with 0.1% sodium azide and 50% glycerol pH 7.3. Store at -20°C.