

## RALBP1 Polyclonal Antibody

Catalog number: 13176-1-AP

Size: 20 µg/150 µl

Source: Rabbit

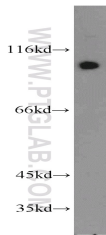
Isotype: IgG

Synonyms:

RALBP1; RALBP1, RIP1, 76 kDa

Ral interacting protein, RLIP76,

DNP SG ATPase



K-562 cells were subjected to SDS PAGE followed by western blot with 13176-1-AP (RALBP1 antibody) at dilution of 1:800

### Applications

Tested applications:	ELISA, WB
Species specificity:	Human, mouse, rat; other species not tested.
Calculated RALBP1 MW:	655aa, 76 kDa
Observed RALBP1 MW:	95kd
Positive WB detected in	K-562 cells
Recommended dilution:	WB: 1:200-1:2000

Application key: WB = Western blotting, IHC = Immunohistochemistry, IF = Immunofluorescence, IP = Immunoprecipitation

### Immunogen information

Immunogen:	Ag3843
GenBank accession number:	BC013126
Gene ID (NCBI):	10928
Full name:	RalA binding protein 1

### Product information

Purification method:	Antigen affinity purification
Storage:	PBS with 0.02% sodium azide and 50% glycerol pH 7.3. Store at -20°C.