

## MEF2BNB Polyclonal Antibody

Catalog number: 10931-1-AP

Size: 61 µg/150 µl

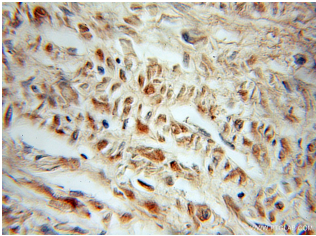
Source: Rabbit

Isotype: IgG

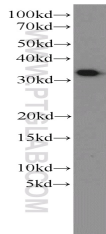
Synonyms:

LOC729991; MEF2BNB,  
AK128256, FLJ32599, FLJ46391,  
hypothetical protein

LOC729991, LOC729991,  
MEF2BNB, UPF0402 protein



Immunohistochemical of paraffin-embedded human prostate cancer using 10931-1-AP (MEF2BNB antibody) at dilution of 1:10 (under 10x lens)



human brain tissue were subjected to SDS PAGE followed by western blot with 10931-1-AP (MEF2BNB antibody) at dilution of 1:1000

### Applications

Tested applications:	ELISA, IHC, WB
Species specificity:	Human, Mouse; other species not tested.
Calculated MEF2BNB MW:	13 kDa
Observed MEF2BNB MW:	12-15 kDa, 32 kDa
Positive WB detected in	Human brain tissue, DU 145 cells, human skeletal muscle tissue, mouse brain tissue
Positive IHC detected in	Human prostate cancer tissue
Recommended dilution:	WB: 1:500-1:5000 IHC: 1:10-1:100

Application key: WB = Western blotting, IHC = Immunohistochemistry, IF = Immunofluorescence, IP = Immunoprecipitation

### Immunogen information

Immunogen:	Ag1370
GenBank accession number:	BC010931
Gene ID (NCBI):	729991
Full name:	Hypothetical protein LOC729991

### Product information

Purification method:	Antigen affinity purification
Storage:	PBS with 0.1% sodium azide and 50% glycerol pH 7.3. Store at -20°C.