

SPRR1B Polyclonal Antibody

Catalog number: 11959-1-AP

Size: 63 µg/150 µl

Source: Rabbit

Isotype: IgG

Synonyms:

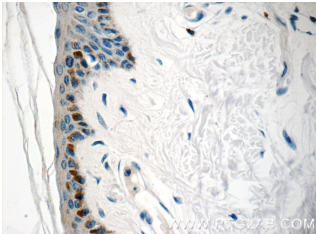
SPRR1B; 14.9 kDa pancornulin,

CORNIFIN, Cornifin B,

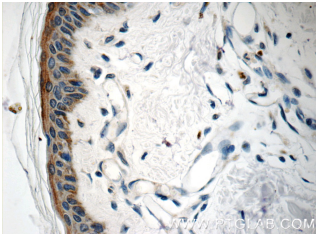
GADD33, Small proline rich

protein 1B, SPR 1B, SPRR1,

SPRR1B



Immunohistochemistry of paraffin-embedded human skin tissue slide using 11959-1-AP (SPRR1B Antibody) at dilution of 1:50 (under 40x lens)



Immunohistochemistry of paraffin-embedded human skin tissue slide using 11959-1-AP (SPRR1B Antibody) at dilution of 1:50 (under 40x lens)

Background

This protein functions as a component of the cross-linked envelope in squamous differentiating cells. It runs as a 15-kDa protein in unreducing SDS PAGE, whereas under reducing conditions it runs as 23 kDa one.

Applications

Tested applications:	ELISA, IHC
Species specificity:	Human; other species not tested.
Calculated SPRR1B MW:	89aa,10 kDa
Observed SPRR1B MW:	
Positive IHC detected in	Human skin tissue
Recommended dilution:	IHC: 1:20-1:200

Application key: WB = Western blotting, IHC = Immunohistochemistry, IF = Immunofluorescence, IP = Immunoprecipitation

Immunogen information

Immunogen:	Ag2563
GenBank accession number:	BC056240
Gene ID (NCBI):	6699
Full name:	Small proline-rich protein 1B (cornifin)

Product information

Purification method:	Antigen affinity purification
Storage:	PBS with 0.1% sodium azide and 50% glycerol pH 7.3. Store at -20°C.