

OPRL1 Polyclonal Antibody

Catalog number: 12970-1-AP

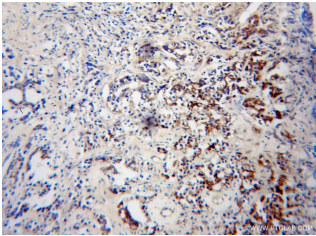
Size: 20 µg/150 µl

Source: Rabbit

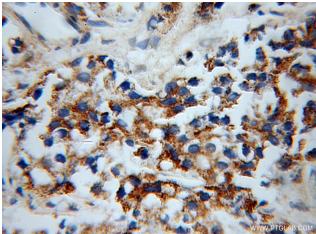
Isotype: IgG

Synonyms:

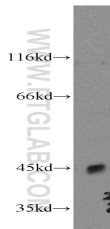
OPRL1; Kappa type 3 opioid receptor, KOR 3, Nociceptin receptor, NOCIR, OOR, opiate receptor like 1, OPRL1, ORL1, Orphanin FQ receptor



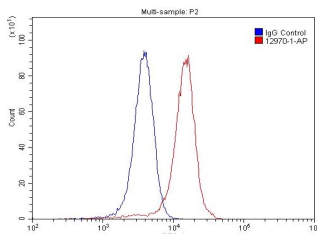
Immunohistochemical of paraffin-embedded human gliomas using 12970-1-AP(OPRL1 antibody) at dilution of 1:100 (under 10x lens)



Immunohistochemical of paraffin-embedded human gliomas using 12970-1-AP(OPRL1 antibody) at dilution of 1:100 (under 40x lens)



HeLa cells were subjected to SDS PAGE followed by western blot with 12970-1-AP(OPRL1 antibody) at dilution of 1:500



Applications

Tested applications:	ELISA, WB, IHC, IP, FC
Cited applications:	WB
Species specificity:	Human, Mouse, Rat; other species not tested.
Cited species:	Rat
Calculated OPRL1 MW:	370aa, 41 kDa
Observed OPRL1 MW:	45 kDa
Positive WB detected in:	HeLa cells, SH-SY5Y cells
Positive IP detected in:	SH-SY5Y cells
Positive IHC detected in:	Human gliomas tissue
Positive FC detected in:	SH-SY5Y cells
Recommended dilution:	WB: 1:500-1:5000 IP: 1:200-1:2000 IHC: 1:20-1:200 FC: N/A

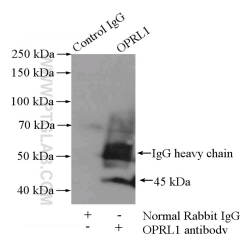
Application key: WB = Western blotting, IHC = Immunohistochemistry, IF = Immunofluorescence, IP = Immunoprecipitation

Immunogen information

Immunogen:	Ag4079
GenBank accession number:	BC038433
Gene ID (NCBI):	4987
Full name:	Opiate receptor-like 1

Product information

Purification method:	Antigen affinity purification
Storage:	PBS with 0.02% sodium azide and 50% glycerol pH 7.3. Store at -20°C.



1X10⁶ SH-SY5Y cells were stained with 0.2ug OPRL1 antibody (12970-1-AP, red) and control antibody (blue). Fixed with 4% PFA blocked with 3% BSA (30 min). Alexa Fluor 488-conjugated AffiniPure Goat Anti-Rabbit IgG(H+L) with dilution 1:1500.

IP Result of anti-OPRL1 (IP:12970-1-AP, 4ug; Detection:12970-1-AP 1:500) with SH-SY5Y cells lysate 2000ug.