

## Cyclophilin A Polyclonal Antibody

Catalog number: 10720-1-AP

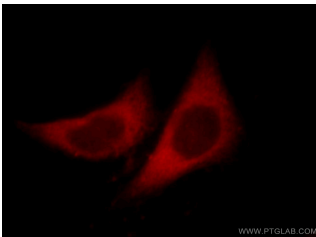
Size: 26 µg/150 µl

Source: Rabbit

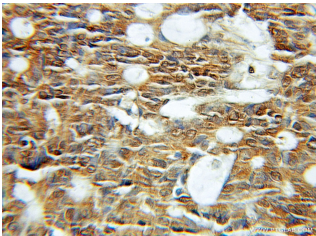
Isotype: IgG

Synonyms:

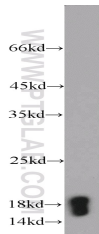
PPIA; Cyclophilin A,  
Cyclosporin A binding protein,  
CYPA, CYPH, PPIA, PPIase A,  
Rotamase A



Immunofluorescent analysis of HepG2 cells, using PPIA antibody 10720-1-AP at 1:25 dilution and Rhodamine-labeled goat anti-rabbit IgG (red).



Immunohistochemical of paraffin-embedded human colon cancer using 10720-1-AP(CYPA antibody) at dilution of 1:200 (under 10x lens)



K-562 cells were subjected to SDS PAGE followed by western blot with 10720-1-AP(CYPA antibody) at dilution of 1:1500

### Background

Cyclophilin A, also named as PPIA and Rotamase A, belongs to the cyclophilin-type PPIase family and PPIase A subfamily. PPIases accelerate the folding of proteins. It catalyzes the cis-trans isomerization of proline imidic peptide bonds in oligopeptides. PPIA forms a trimolecular complex with cyclophilin and calcineurins to inhibit calcineurin phosphatase activity. PPIA is incorporated into the virion of the type 1 human immunodeficiency virus (HIV-1) via a direct interaction with the capsid domain of the viral Gag polyprotein and is crucial for efficient viral replication.

### Applications

Tested applications:	ELISA, WB, IHC, IF, FC
Cited applications:	IF, IHC, WB
Species specificity:	Human, Mouse, Rat; other species not tested.
Cited species:	Human, monkey, mouse
Calculated Cyclophilin A MW:	18 kDa
Observed Cyclophilin A MW:	18kd
Positive WB detected in	K-562 cells, C6 cells, HeLa cells, HepG2 cells, NIH/3T3 cells, Raji cells
Positive IHC detected in	Human colon cancer tissue, human brain tissue, human kidney tissue, human lung tissue, human ovary tissue, human placenta tissue, human skin tissue, human spleen tissue, human testis tissue, human tonsillitis tissue
Positive IF detected in	Hela cells
Positive FC detected in	HeLa cells
Recommended dilution:	WB: 1:500-1:5000 IHC: 1:20-1:200 IF: 1:10-1:100 FC: N/A

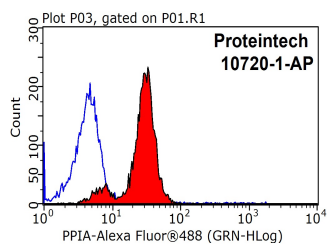
Application key: WB = Western blotting, IHC = Immunohistochemistry, IF = Immunofluorescence, IP = Immunoprecipitation

### Immunogen information

Immunogen:	Ag1120
GenBank accession number:	BC005320
Gene ID (NCBI):	5478
Full name:	Peptidylprolyl isomerase A (cyclophilin A)

### Product information

Purification method:	Antigen affinity purification
Storage:	PBS with 0.1% sodium azide and 50% glycerol pH 7.3. Store at -20°C.



**1X10<sup>6</sup> HeLa cells were stained with 0.2ug CYP A antibody (10720-1-AP, red) and control antibody (blue). Fixed with 90% MeOH blocked with 3% BSA (30 min). Alexa Fluor 488-conjugated AffiniPure Goat Anti-Rabbit IgG(H+L) with dilution 1:1000.**