

CTAGE1 Polyclonal Antibody

Catalog number: 13267-1-AP

Size: 20 µg/150 µl

Source: Rabbit

Isotype: IgG

Synonyms:

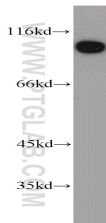
CTAGE1; Cancer/testis antigen

21.2, CT21.1, CT21.2,

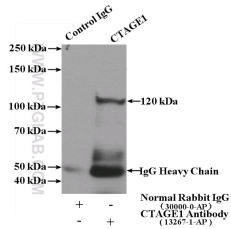
CT21.2, CTAGE2, CTAGE, CTAGE

1, CTAGE 2, CTAGE1, CTAGE2,

Protein cTAGE 2



Jurkat cells were subjected to SDS PAGE followed by western blot with 13267-1-AP (CTAGE1 antibody) at dilution of 1:800



IP Result of anti-CTAGE1 (IP:13267-1-AP, 4µg; Detection:13267-1-AP 1:500) with HeLa cells lysate 2400µg.

Applications

Tested applications:	ELISA, WB, IP
Cited applications:	WB
Species specificity:	Human; other species not tested.
Cited species:	Human
Calculated CTAGE1 MW:	754aa, 89 kDa
Observed CTAGE1 MW:	86-120 kDa
Positive WB detected in:	Jurkat cells
Positive IP detected in:	HeLa cells
Recommended dilution:	WB: 1:200-1:2000 IP: 1:200-1:2000

Application key: WB = Western blotting, IHC = Immunohistochemistry, IF = Immunofluorescence, IP = Immunoprecipitation

Immunogen information

Immunogen:	Ag3948
GenBank accession number:	BC031065
Gene ID (NCBI):	64693
Full name:	Cutaneous T-cell lymphoma-associated antigen 1

Product information

Purification method:	Antigen affinity purification
Storage:	PBS with 0.02% sodium azide and 50% glycerol pH 7.3. Store at -20°C.