

SSX1 Polyclonal Antibody

Catalog number: 11670-1-AP

Size: 60 µg/150 µl

Source: Rabbit

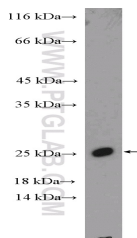
Isotype: IgG

Synonyms:

SSX1; Cancer/testis antigen 5.1,

CT5.1, Protein SSX1, SSRC,

SSX1



PC-3 cells were subjected to SDS PAGE followed by western blot with 11670-1-AP (SSX1 Antibody) at dilution of 1:300

Applications

Tested applications:	ELISA, WB
Species specificity:	Human; other species not tested.
Calculated SSX1 MW:	22 kDa
Observed SSX1 MW:	21-25 kDa
Positive WB detected in	PC-3 cells, HeLa cells, HepG2 cells
Recommended dilution:	WB: 1:200-1:1000

Application key: WB = Western blotting, IHC = Immunohistochemistry, IF = Immunofluorescence, IP = Immunoprecipitation

Immunogen information

Immunogen:	Ag2254
GenBank accession number:	BC001003
Gene ID (NCBI):	6756
Full name:	Synovial sarcoma, X breakpoint 1

Product information

Purification method:	Antigen affinity purification
Storage:	PBS with 0.1% sodium azide and 50% glycerol pH 7.3. Store at -20°C.