

## PITX1 Polyclonal Antibody

Catalog number: 10873-1-AP

Size: 57 µg/150 µl

Source: Rabbit

Isotype: IgG

Synonyms:

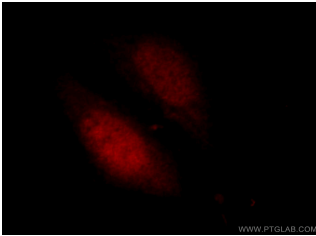
PITX1; BFT, Homeobox protein

PITX1, paired like

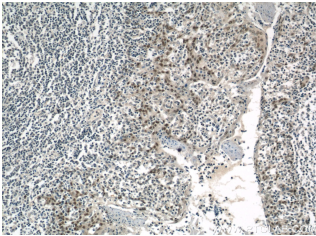
homeodomain 1, Pituitary

homeobox 1, PITX1, POTX,

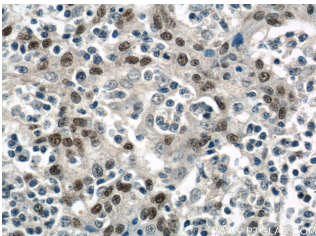
PTX1



Immunofluorescent analysis of HepG2 cells, using PITX1 antibody 10873-1-AP at 1:25 dilution and Rhodamine-labeled goat anti-rabbit IgG (red).



Immunohistochemical of paraffin-embedded human tonsillitis using 10873-1-AP (PITX1 antibody) at dilution of 1:50 (under 10x lens)



Immunohistochemical of paraffin-embedded human tonsillitis using 10873-1-AP (PITX1 antibody) at dilution of 1:50 (under 40x lens)

### Background

PITX1, also named as Pituitary homeobox 1 or BFT, is a 314 amino acid protein, which contains one homeobox DNA-binding domain and belongs to the paired homeobox family. Bicoid subfamily. PITX1 localizes in the nucleus and may play a role in the development of anterior structures, and in particular, the brain and facies and in specifying the identity or structure of hindlimb.

### Applications

Tested applications:	ELISA, WB, IHC, IF, IP
Cited applications:	IF, WB
Species specificity:	Human, Mouse; other species not tested.
Cited species:	Rat
Calculated PITX1 MW:	34 kDa
Observed PITX1 MW:	38-40 kDa
Positive WB detected in	HeLa cells, A431 cells, MCF7 cells
Positive IP detected in	HeLa cells
Positive IHC detected in	Human tonsillitis tissue, human colon tissue
Positive IF detected in	HepG2 cells
Recommended dilution:	WB: 1:500-1:5000
	IP: 1:500-1:5000
	IHC: 1:20-1:200
	IF: 1:10-1:100

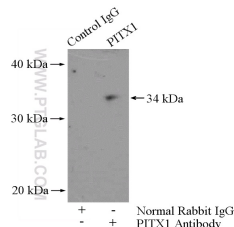
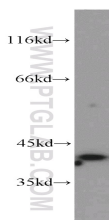
Application key: WB = Western blotting, IHC = Immunohistochemistry, IF = Immunofluorescence, IP = Immunoprecipitation

### Immunogen information

Immunogen:	Ag1303
GenBank accession number:	BC009412
Gene ID (NCBI):	5307
Full name:	Paired-like homeodomain 1

### Product information

Purification method:	Antigen affinity purification
Storage:	PBS with 0.1% sodium azide and 50% glycerol pH 7.3. Store at -20°C.



HeLa cells were subjected to SDS PAGE followed by western blot with 10873-1-AP(PITX1 antibody) at dilution of 1:800

IP Result of anti-PITX1  
(IP:10873-1-AP, 4ug;  
Detection:10873-1-AP 1:1000)  
with HeLa cells lysate 1200ug.