

CDK1 Polyclonal Antibody

Catalog number: 10762-1-AP

Size: 20 µg/150 µl

Source: Rabbit

Isotype: IgG

Synonyms:

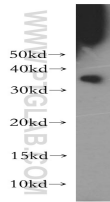
CDC2; CDC2, CDC28A, CDK1,

Cell division protein kinase 1,

Cyclin dependent kinase 1,

DKFZp686L20222, p34 protein

kinase



HeLa cells were subjected to SDS PAGE followed by western blot with 10762-1-AP (CDK1 antibody) at dilution of 1:300

Background

Cyclin-dependent kinase-1 (CDK1), also known as CDC2, CDC28A, CDKN1, P34CDC2, is a catalytic subunit of a protein kinase complex, called the M-phase promoting factor, that induces entry into mitosis and is universal among eukaryotes. It belongs to the protein kinase superfamily and has 2 isoforms produced by alternative splicing.

Applications

Tested applications:	ELISA, WB
Species specificity:	Human; other species not tested.
Calculated CDK1 MW:	25kd
Observed CDK1 MW:	34kd, 27kd
Positive WB detected in	HeLa cells
Recommended dilution:	WB: 1:200-1:1000

Application key: WB = Western blotting, IHC = Immunohistochemistry, IF = Immunofluorescence, IP = Immunoprecipitation

Immunogen information

Immunogen:	Ag1183
GenBank accession number:	BC014563
Gene ID (NCBI):	983
Full name:	Cell division cycle 2, G1 to S and G2 to M

Product information

Purification method:	Antigen affinity purification
Storage:	PBS with 0.1% sodium azide and 50% glycerol pH 7.3. Store at -20°C.