

## SCP2 Polyclonal Antibody

Catalog number: 14397-1-AP

Size: 40 µg/150 µl

Source: Rabbit

Isotype: IgG

Synonyms:

SCP2; DKFZp686C12188,

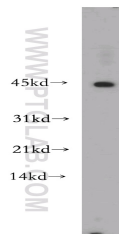
DKFZp686D11188, NLTP, NSL

TP, SCP 2, SCP chi, SCP X,

SCP2, SCPX, sterol carrier

protein 2, Sterol carrier protein

X



A549 cells were subjected to SDS PAGE followed by western blot with 14397-1-AP (SCPX antibody) at dilution of 1:500

### Applications

Tested applications:	ELISA, WB
Species specificity:	Human, Mouse, Rat; other species not tested.
Calculated SCP2 MW:	59kd
Observed SCP2 MW:	44kd, 52kd
Positive WB detected in	A549 cells, BxPC-3 cells, mouse testis tissue, PC-3 cells
Recommended dilution:	WB: 1:600 - 1:2400

Application key: WB = Western blotting, IHC = Immunohistochemistry, IF = Immunofluorescence, IP = Immunoprecipitation

### Immunogen information

Immunogen:	Ag5895
GenBank accession number:	BC067108
Gene ID (NCBI):	6342
Full name:	Sterol carrier protein 2

### Product information

Purification method:	Antigen affinity purification
Storage:	PBS with 0.02% sodium azide and 50% glycerol pH 7.3. Store at -20°C.