

## IgG light chain (Kappa) Polyclonal Antibody

Catalog number: 11781-1-AP

Size: 48 µg/150 µl

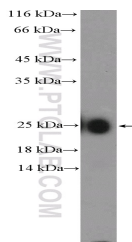
Source: Rabbit

Isotype: IgG

Synonyms:

IGKV1-5; IGKV, IGKV1 5,

IGKV15, IGKV1-5, L12, L12a, V1



human plasma (0.3µg) tissue were subjected to SDS PAGE followed by western blot with 11781-1-AP( IgG light chain (Kappa) Antibody) at dilution of 1:1000

### Applications

Tested applications:	ELISA, WB
Species specificity:	Human, Mouse; other species not tested.
Calculated IgG light chain (Kappa) MW:	239aa,26 kDa
Observed IgG light chain (Kappa) MW:	26 kDa,13 kDa
Positive WB detected in	Human plasma tissue, A549 cells, K-562 cells, mouse spleen tissue
Recommended dilution:	WB: 1:500-1:5000

Application key: WB = Western blotting, IHC = Immunohistochemistry, IF = Immunofluorescence, IP = Immunoprecipitation

### Immunogen information

Immunogen:	Ag2406
GenBank accession number:	BC030814
Gene ID (NCBI):	28299
Full name:	Immunoglobulin kappa variable 1-5

### Product information

Purification method:	Antigen affinity purification
Storage:	PBS with 0.1% sodium azide and 50% glycerol pH 7.3. Store at -20°C.