

DOK2 Polyclonal Antibody

Catalog number: 14087-1-AP

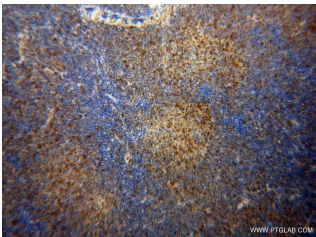
Size: 62 µg/150 µl

Source: Rabbit

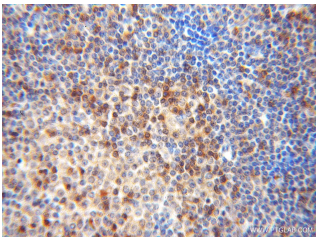
Isotype: IgG

Synonyms:

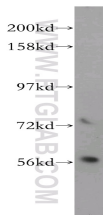
DOK2; Docking protein 2,
docking protein 2, 56kDa,
DOK2, p56(dok 2), p56DOK,
p56dok 2



Immunohistochemical of paraffin-embedded human lymphoma using 14087-1-AP(DOK2 antibody) at dilution of 1:100 (under 10x lens)



Immunohistochemical of paraffin-embedded human lymphoma using 14087-1-AP(DOK2 antibody) at dilution of 1:100 (under 40x lens)



Jurkat cells were subjected to SDS PAGE followed by western blot with 14087-1-AP(DOK2 antibody) at dilution of 1:1000

Background

Docking protein 2 (Dok2) is an adapter protein which is involved in hematopoiesis. Dok2 is able to control Klf1 expression by transcriptional regulation through directly binding to its promoter region (PMID: 25075100).

Applications

Tested applications:	ELISA, WB, IHC
Species specificity:	Human, Mouse, Rat; other species not tested.
Calculated DOK2 MW:	412aa, 45 kDa
Observed DOK2 MW:	56kd
Positive WB detected in	Jurkat cells
Positive IHC detected in	Human lymphoma tissue
Recommended dilution:	WB: 1:500-1:5000 IHC: 1:20-1:200

Application key: WB = Western blotting, IHC = Immunohistochemistry, IF = Immunofluorescence, IP = Immunoprecipitation

Immunogen information

Immunogen:	Ag5218
GenBank accession number:	BC032623
Gene ID (NCBI):	9046
Full name:	Docking protein 2, 56kDa

Product information

Purification method:	Antigen affinity purification
Storage:	PBS with 0.02% sodium azide and 50% glycerol pH 7.3. Store at -20°C.