

EPSTI1 Polyclonal Antibody

Catalog number: 11627-1-AP

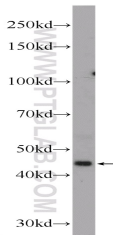
Size: 20 µg/150 µl

Source: Rabbit

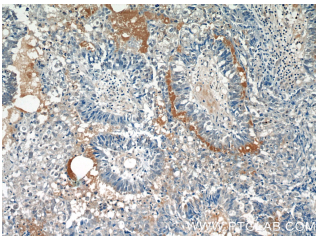
Isotype: IgG

Synonyms:

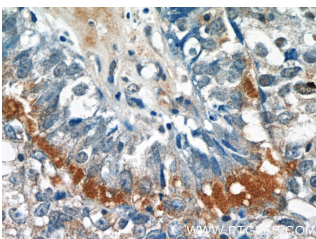
EPSTI1; BRESI1, EPSTI1



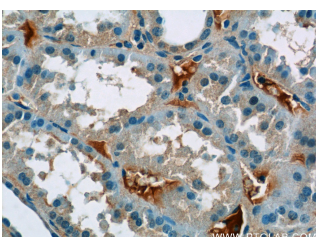
mouse small intestine tissue were subjected to SDS PAGE followed by western blot with 11627-1-AP(EPSTI1 Antibody) at dilution of 1:300



Immunohistochemistry of paraffin-embedded human breast cancer tissue slide using 11627-1-AP(EPSTI1 Antibody) at dilution of 1:50 (under 10x lens)



Immunohistochemistry of paraffin-embedded human breast cancer tissue slide using 11627-1-AP(EPSTI1 Antibody) at dilution of 1:50 (under 40x lens)



Immunohistochemistry of paraffin-embedded human kidney tissue slide using

Background

Real-time PCR revealed highest expression in placenta; strong expression in small intestine, spleen, salivary gland, and testes; and low levels of expression in normal breast and several other tissues. The expression of EPSTI1 was upregulated (range 5.6-72.1) in all 14 breast carcinomas tested. Microdissection revealed that both tumor and stromal tissue overexpressed EPSTI1. (PubMed: 11991720)

Applications

Tested applications:	ELISA, WB, IHC
Species specificity:	Human, Mouse; other species not tested.
Calculated EPSTI1 MW:	410aa, 47 kDa
Observed EPSTI1 MW:	40 kDa
Positive WB detected in	Mouse small intestine tissue
Positive IHC detected in	Human breast cancer tissue, human kidney tissue
Recommended dilution:	WB: 1:200-1:1000 IHC: 1:20-1:200

Application key: WB = Western blotting, IHC = Immunohistochemistry, IF = Immunofluorescence, IP = Immunoprecipitation

Immunogen information

Immunogen:	Ag2157
GenBank accession number:	BC023660
Gene ID (NCBI):	94240
Full name:	Epithelial stromal interaction 1 (breast)

Product information

Purification method:	Antigen affinity purification
Storage:	PBS with 0.1% sodium azide and 50% glycerol pH 7.3. Store at -20°C.

**11627-1-AP(EPST11
Antibody) at dilution of 1:50
(under 40x lens)**