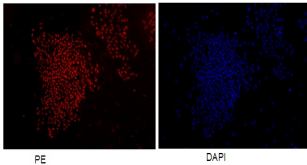


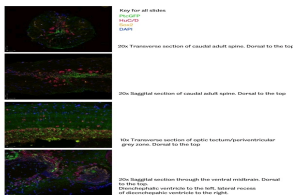
SOX2 Polyclonal Antibody

Catalog number: 11064-1-AP
Size: 60 µg/150 µl
Source: Rabbit
Isotype: IgG
Synonyms:
SOX2; ANOP3, MCOPS3, SOX2,
Transcription factor SOX 2

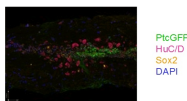


Confocal immunofluorescent analysis of human embryonic stem cells with 11064-1-AP at dilution of 1:50. The PE shows staining with 11064-1-AP/PE. The DAPI shows nuclear staining by DAPI.

Confocal immunofluorescent analysis of human embryonic stem cells with 11064-1-AP at dilution of 1:50. The PE shows staining with 11064-1-AP/PE. The DAPI shows nuclear staining by DAPI.

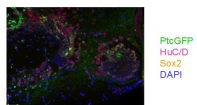


IF result of anti-SOX2(11064-1-AP) in Zebrafish by Dr. Caroline Parkin.

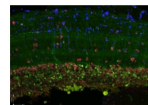


20X Sagittal section of caudal adult spine. Dorsal to the top.

IF result of anti-SOX2 (11064-1-AP) with the spine of zebrafish by Dr. Caroline.



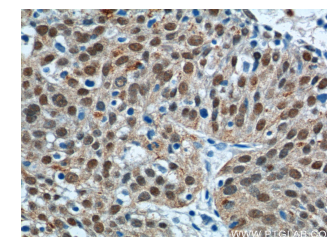
20X Sagittal section through the ventral midbrain. Dorsal to the top. Diencephalic ventricle to left. Lateral recess of diencephalic ventricle to the right.



10X Transverse section of optic tectum/perventricular grey zone. Dorsal to the top.

IF result of anti-SOX2 (11064-1-AP) with the midbrain of zebrafish by Dr. Caroline.

IF result of anti-SOX2 (11064-1-AP) with the grey zone of zebrafish by Dr. Caroline.



Immunohistochemistry of paraffin-embedded human lung cancer tissue slide using 11064-1-AP (SOX2 Antibody)

Background

Sox2, also known as SRY (sex determining region Y)-box 2, is a transcription factor essential for maintaining self-renewal of undifferentiated ES cells and is one of the key transcription factors used to reprogram mouse and human fibroblasts to a pluripotent state. Sox2 expressed in undifferentiated pluripotent stem cells and germ cells during development. Affinity purified rabbit anti-Sox2 antibody can be used to demonstrate pluripotency of ES and iPS cells. This antibody is a rabbit polyclonal antibody raised against an internal region of human SOX2.

Applications

Tested applications:	ELISA, IF, WB, IHC
Cited applications:	IF, IHC, WB
Species specificity:	Human, Mouse, Rat, Zebrafish; other species not tested.
Cited species:	Human, rat
Calculated SOX2 MW:	34 kDa
Observed SOX2 MW:	34 kDa-37 kDa
Positive WB detected in	Transfected HEK-293 cells
Positive IHC detected in	Human lung cancer tissue
Positive IF detected in	Human embryonic stem cells, Zebrafish
Recommended dilution:	WB: 1:2000-1:20000
	IHC: 1:20-1:200
	IF: 1:20-1:200

Application key: WB = Western blotting, IHC = Immunohistochemistry, IF = Immunofluorescence, IP = Immunoprecipitation

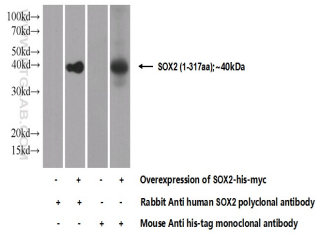
Immunogen information

Immunogen:	Ag1530
GenBank accession number:	BC013923
Gene ID (NCBI):	6657
Full name:	SRY (sex determining region Y)-box 2

Product information

Purification method:	Antigen affinity purification
Storage:	PBS with 0.1% sodium azide and 50% glycerol pH 7.3. Store at -20°C.

at dilution of 1:200 (under 40x lens).



**Transfected HEK-293 cells
were subjected to SDS PAGE
followed by western blot with
11064-1-AP(SOX2 Antibody)
at dilution of 1:5000**