

COG6 Polyclonal Antibody

Catalog number: 14277-1-AP

Size: 84 µg/150 µl

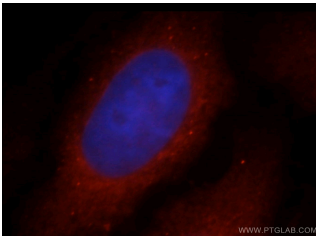
Source: Rabbit

Isotype: IgG

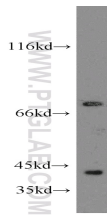
Synonyms:

COG6; COD2, COG complex subunit 6, COG6,

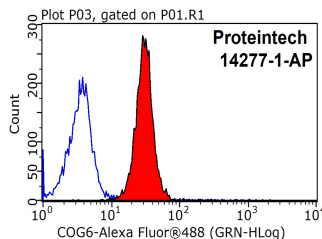
DKFZp313D191, KIAA1134



Immunofluorescent analysis of MCF-7 cells, using COG6 antibody 14277-1-AP at 1:25 dilution and Rhodamine-labeled goat anti-rabbit IgG (red). Blue pseudocolor = DAPI (fluorescent DNA dye).



human brain tissue were subjected to SDS PAGE followed by western blot with 14277-1-AP(COG6 antibody) at dilution of 1:300



1X10⁶ MCF-7 cells were stained with 0.2ug COG6 antibody (14277-1-AP, red) and control antibody (blue). Fixed with 90% MeOH blocked with 3% BSA (30 min). Alexa Fluor 488-conjugated AffiniPure Goat Anti-Rabbit IgG(H+L) with dilution 1:1500.

Applications

Tested applications:	ELISA, WB, IF, FC
Species specificity:	Human, Mouse, Rat; other species not tested.
Calculated COG6 MW:	73 kDa
Observed COG6 MW:	73kd
Positive WB detected in	Human brain tissue, NIH/3T3 cells
Positive IF detected in	MCF-7 cells, Hela cells
Positive FC detected in	MCF-7 cells
Recommended dilution:	WB: 1:500-1:5000
	IF: 1:10-1:100
	FC: N/A

Application key: WB = Western blotting, IHC = Immunohistochemistry, IF = Immunofluorescence, IP = Immunoprecipitation

Immunogen information

Immunogen:	Ag5624
GenBank accession number:	BC051723
Gene ID (NCBI):	57511
Full name:	Component of oligomeric golgi complex 6

Product information

Purification method:	Antigen affinity purification
Storage:	PBS with 0.02% sodium azide and 50% glycerol pH 7.3. Store at -20°C.