

## Midkine Polyclonal Antibody

Catalog number: 11009-1-AP

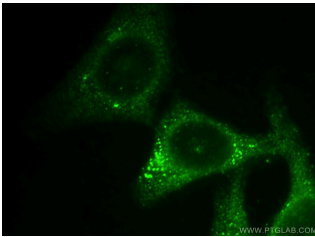
Size: 28 µg/150 µl

Source: Rabbit

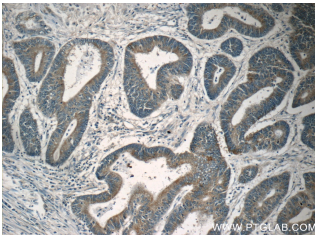
Isotype: IgG

Synonyms:

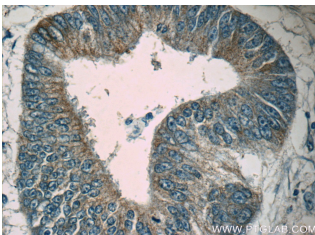
MDK; ARAP, FLJ27379, MDK,  
Midkine, MK, MK1, NEGF2



Immunofluorescent analysis of HepG2 cells, using MDK antibody 11009-1-AP at 1:50 dilution and FITC-labeled donkey anti-rabbit IgG (green).



Immunohistochemistry of paraffin-embedded human colon cancer tissue slide using 11009-1-AP (MDK Antibody) at dilution of 1:50 (under 10x lens)



Immunohistochemistry of paraffin-embedded human colon cancer tissue slide using 11009-1-AP (MDK Antibody) at dilution of 1:50 (under 40x lens)

### Applications

Tested applications:	ELISA, IF, IHC
Species specificity:	Human, Mouse, Rat; other species not tested.
Calculated Midkine MW:	16kd
Observed Midkine MW:	
Positive IHC detected in	Human colon cancer tissue, human liver cancer tissue, human pancreas cancer tissue, human prostate cancer tissue
Positive IF detected in	HepG2 cells
Recommended dilution:	IHC: 1:20-1:200 IF: 1:20-1:200

Application key: WB = Western blotting, IHC = Immunohistochemistry, IF = Immunofluorescence, IP = Immunoprecipitation

### Immunogen information

Immunogen:	Ag1465
GenBank accession number:	BC011704
Gene ID (NCBI):	4192
Full name:	Midkine (neurite growth-promoting factor 2)

### Product information

Purification method:	Antigen affinity purification
Storage:	PBS with 0.1% sodium azide and 50% glycerol pH 7.3. Store at -20°C.