

## NKCC1 Polyclonal Antibody

Catalog number: 13884-1-AP

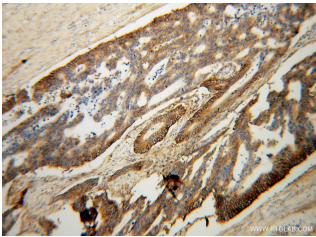
Size: 20 µg/150 µl

Source: Rabbit

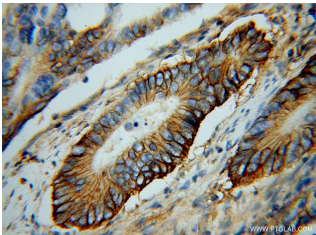
Isotype: IgG

Synonyms:

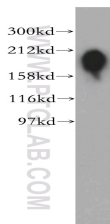
SLC12A2; Basolateral Na K Cl symporter, BSC, BSC2, NKCC1, SLC12A2



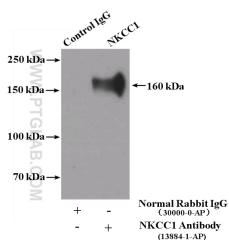
Immunohistochemical of paraffin-embedded human colon cancer using 13884-1-AP (SLC12A2 antibody) at dilution of 1:100 (under 10x lens)



Immunohistochemical of paraffin-embedded human colon cancer using 13884-1-AP (SLC12A2 antibody) at dilution of 1:100 (under 40x lens)



A549 cells were subjected to SDS PAGE followed by western blot with 13884-1-AP (SLC12A2 antibody) at dilution of 1:400



IP Result of anti-SLC12A2

(IP:13884-1-AP, 4µg;

### Applications

Tested applications:	ELISA, WB, IHC, IP
Cited applications:	IHC, WB
Species specificity:	Human, Mouse, Rat; other species not tested.
Cited species:	Mouse, rat
Calculated NKCC1 MW:	131 kDa
Observed NKCC1 MW:	170 kDa
Positive WB detected in	A549 cells, PC-3 cells
Positive IP detected in	Mouse brain tissue
Positive IHC detected in	Human colon cancer tissue
Recommended dilution:	WB: 1:500-1:5000 IP: 1:200-1:2000 IHC: 1:20-1:200

Application key: WB = Western blotting, IHC = Immunohistochemistry, IF = Immunofluorescence, IP = Immunoprecipitation

### Immunogen information

Immunogen:	Ag4991
GenBank accession number:	BC033003
Gene ID (NCBI):	6558
Full name:	Solute carrier family 12 (sodium/potassium/chloride transporters), member 2

### Product information

Purification method:	Antigen affinity purification
Storage:	PBS with 0.02% sodium azide and 50% glycerol pH 7.3. Store at -20°C.

Detection:13884-1-AP 1:500)  
with mouse brain tissue lysate  
3600ug.