

MPPED1 Polyclonal Antibody

Catalog number: 13677-1-AP

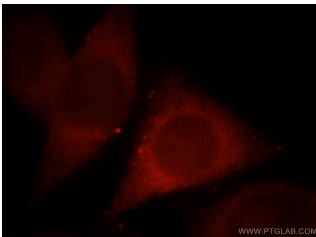
Size: 30 µg/150 µl

Source: Rabbit

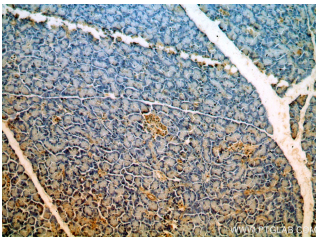
Isotype: IgG

Synonyms:

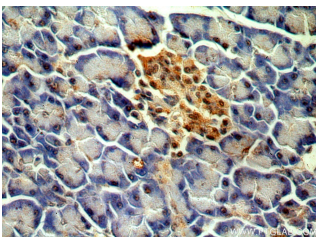
MPPED1; 239AB, Adult brain protein 239, C22orf1, FAM1A, FLJ50009, FLJ54633, FLJ59965, FLJ78907, MPPED1



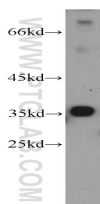
Immunofluorescent analysis of HeLa cells, using MPPED1 antibody 13677-1-AP at 1:25 dilution and Rhodamine-labeled goat anti-rabbit IgG (red).



Immunohistochemical of paraffin-embedded human pancreas using 13677-1-AP(MPPED1 antibody) at dilution of 1:50 (under 10x lens)



Immunohistochemical of paraffin-embedded human pancreas using 13677-1-AP(MPPED1 antibody) at dilution of 1:50 (under 40x lens)



mouse brain tissue were

Applications

Tested applications:	ELISA, WB, IHC, IF
Species specificity:	Human, Mouse, Rat; other species not tested.
Calculated MPPED1 MW:	326aa, 37 kDa
Observed MPPED1 MW:	37 kDa
Positive WB detected in	Mouse brain tissue, rat brain tissue
Positive IHC detected in	Human pancreas tissue, human brain tissue, human heart tissue
Positive IF detected in	Hela cells
Recommended dilution:	WB: 1:500-1:5000 IHC: 1:20-1:200 IF: 1:10-1:100

Application key: WB = Western blotting, IHC = Immunohistochemistry, IF = Immunofluorescence, IP = Immunoprecipitation

Immunogen information

Immunogen:	Ag4672
GenBank accession number:	BC028035
Gene ID (NCBI):	758
Full name:	Metallophosphoesterase domain containing 1

Product information

Purification method:	Antigen affinity purification
Storage:	PBS with 0.02% sodium azide and 50% glycerol pH 7.3. Store at -20°C.

subjected to SDS PAGE
followed by western blot with
13677-1-AP(MPPED1
antibody) at dilution of 1:1500