

MKS3 Polyclonal Antibody

Catalog number: 13975-1-AP

Size: 26 µg/150 µl

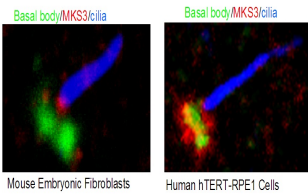
Source: Rabbit

Isotype: IgG

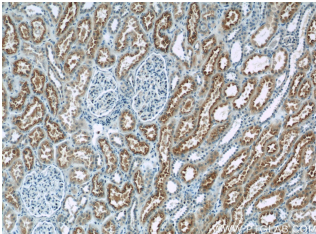
Synonyms:

TMEM67; JBTS6, Meckel syndrome type 3 protein, MECKELIN, MKS3, TMEM67, TNEM67, transmembrane protein 67

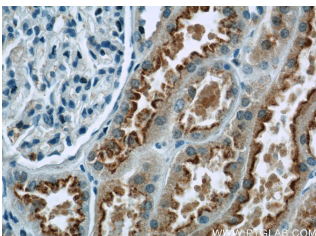
MKS3 marks the proximal transition zone and basal body



IF result from Dr. Corbit, Kevin. anti-MKS3(13975-1-AP) marks the proximal transition zone and basal body of Human hTERT-RPE1 cells and Mouse embryonic fibroblasts.



Immunohistochemistry of paraffin-embedded human kidney tissue slide using 13975-1-AP(TMEM67 Antibody) at dilution of 1:50 (under 10x lens)



Immunohistochemistry of paraffin-embedded human kidney tissue slide using 13975-1-AP(TMEM67 Antibody) at dilution of 1:50 (under 40x lens)

Applications

Tested applications:	ELISA, IF, IHC
Cited applications:	IF, WB
Species specificity:	Human, Mouse; other species not tested.
Cited species:	Human, mouse
Calculated MKS3 MW:	112 kDa
Observed MKS3 MW:	
Positive IHC detected in	Human kidney tissue, human hepatocirrhosis tissue
Positive IF detected in	HTERT-RPE1 cells
Recommended dilution:	IHC: 1:20-1:200 IF: 1:20-1:200

Application key: WB = Western blotting, IHC= Immunohistochemistry, IF= Immunofluorescence, IP= Immunoprecipitation

Immunogen information

Immunogen:	Ag5009
GenBank accession number:	BC032835
Gene ID (NCBI):	91147
Full name:	Transmembrane protein 67

Product information

Purification method:	Antigen affinity purification
Storage:	PBS with 0.02% sodium azide and 50% glycerol pH 7.3. Store at -20°C.