

IGFBP1 Polyclonal Antibody

Catalog number: 13981-1-AP

Size: 33 µg/150 µl

Source: Rabbit

Isotype: IgG

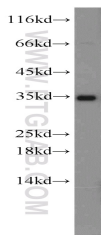
Synonyms:

IGFBP1; AFBP, hIGFBP 1, IBP 1,

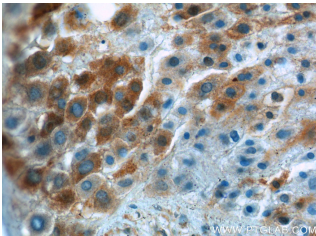
IBP1, IGF binding protein 1, IGF

BP25, IGFBP 1, IGFBP1,

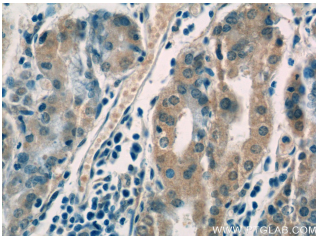
Placental protein 12, PP12



human placenta tissue were subjected to SDS PAGE followed by western blot with 13981-1-AP(IGFBP1 antibody) at dilution of 1:300



Immunohistochemistry of paraffin-embedded human placenta tissue slide using 13981-1-AP(IGFBP1 Antibody) at dilution of 1:50 (under 40x lens)



Immunohistochemistry of paraffin-embedded human stomach tissue slide using 13981-1-AP(IGFBP1 Antibody) at dilution of 1:50 (under 40x lens)

Background

Insulin-like growth factor (IGF)-binding proteins (IGFBPs) family contains members like IGFBP-1, -2, -3, -4, -5 and -6. IGFBPs prolong the half-life of the IGFs and have been shown to either inhibit or stimulate the growth promoting effects of the IGFs on cell culture. They alter the interaction of IGFs with their cell surface receptors. IGF-I physically interacts with IGFBP-1 and that IGFBP-1 also binds to an integrin receptor, but the effect of IGFBP-1 on cell migration may be independent of IGF-I and is probably mediated through the alpha 5 beta 1 integrin. Transgenic mice models demonstrated that IGFBPs played important roles in the pathogenesis of obesity and insulin resistance. Studies conducted in humans demonstrated the close relation between IGFBPs and the components of the metabolic syndrome.

Applications

Tested applications:	ELISA, WB, IHC
Cited applications:	WB
Species specificity:	Human; other species not tested.
Cited species:	Human
Calculated IGFBP1 MW:	28 kDa
Observed IGFBP1 MW:	35 kDa
Positive WB detected in	Human placenta tissue
Positive IHC detected in	Human placenta tissue, human stomach tissue
Recommended dilution:	WB: 1:200-1:1000 IHC: 1:20-1:200

Application key: WB = Western blotting, IHC = Immunohistochemistry, IF = Immunofluorescence, IP = Immunoprecipitation

Immunogen information

Immunogen:	Ag5026
GenBank accession number:	BC057806
Gene ID (NCBI):	3484
Full name:	Insulin-like growth factor binding protein 1

Product information

Purification method:	Antigen affinity purification
Storage:	PBS with 0.02% sodium azide and 50% glycerol pH 7.3. Store at -20°C.