

## SFRP2 Polyclonal Antibody

Catalog number: 12189-1-AP

Size: 20 µg/150 µl

Source: Rabbit

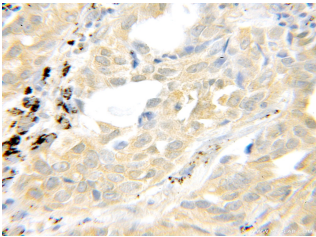
Isotype: IgG

Synonyms:

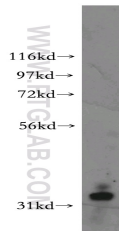
SFRP2; FRP 2, FRP2, FRP-2,

SARP 1, SARP1, SDF 5, sFRP 2,

SFRP2, UNQ361/PRO697



Immunohistochemical of paraffin-embedded human lung cancer using 12189-1-AP(SFRP2 antibody) at dilution of 1:50 (under 10x lens)



Y79 cells were subjected to SDS PAGE followed by western blot with 12189-1-AP(SFRP2 antibody) at dilution of 1:400

### Background

Secreted frizzled-related protein 2 (Sfrp2) is a secreted glycoprotein molecule containing an N terminal cysteine-rich domain, which is typically 30-50% identical to the putative Wnt-binding site of the frizzled receptor, and a C terminal heparin-binding domain with weak homology to netrins. It has been implicated in diverse cellular processes, including embryogenesis, regulation of cell apoptosis, and cell differentiation. Methylation of this gene is a potential marker for the presence of colorectal cancer.

### Applications

Tested applications:	ELISA, WB, IHC
Cited applications:	WB
Species specificity:	Human; other species not tested.
Cited species:	Mouse
Calculated SFRP2 MW:	295aa,34 kDa
Observed SFRP2 MW:	33 kDa
Positive WB detected in	Y79 cells, COLO 320 cells, MCF7 cells
Positive IHC detected in	Human lung cancer tissue
Recommended dilution:	WB: 1:200-1:2000 IHC: 1:20-1:200

Application key: WB = Western blotting, IHC = Immunohistochemistry, IF = Immunofluorescence, IP = Immunoprecipitation

### Immunogen information

Immunogen:	Ag2853
GenBank accession number:	BC008666
Gene ID (NCBI):	6423
Full name:	Secreted frizzled-related protein 2

### Product information

Purification method:	Antigen affinity purification
Storage:	PBS with 0.1% sodium azide and 50% glycerol pH 7.3. Store at -20°C.