

## GOSR2/Membrin Polyclonal Antibody

Catalog number: 12095-1-AP

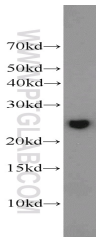
Size: 39 µg/150 µl

Source: Rabbit

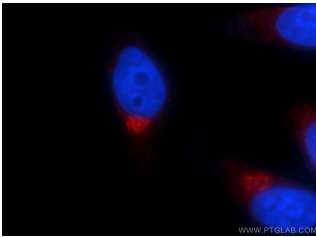
Isotype: IgG

Synonyms:

GOSR2; 27 kDa Golgi SNARE protein, Bos1, GOSR2, GS27, Membrin



Jurkat cells were subjected to SDS PAGE followed by western blot with 12095-1-AP (GOSR2 antibody) at dilution of 1:1000



Immunofluorescent analysis of HepG2 cells using 12095-1-AP (GOSR2 Antibody) at dilution of 1:25 and Rhodamine-Goat anti-Rabbit IgG

### Background

Golgi SNAP receptor complex member 2 (GOSR2), also known as GS27 or Membrin, is a member of the soluble NSF attachment protein receptor (SNARE) family of vesicle docking proteins. GOSR2 is localized in Golgi apparatus. It is involved in transport of proteins from the cis/medial-Golgi to the trans-Golgi network.

### Applications

<b>Tested applications:</b>	ELISA, WB, IF
<b>Species specificity:</b>	Human, Mouse; other species not tested.
<b>Calculated GOSR2/Membrin MW:</b>	212aa, 25 kDa
<b>Observed GOSR2/Membrin MW:</b>	25 kDa
<b>Positive WB detected in</b>	Jurkat cells, human liver tissue, mouse liver tissue, mouse stomach tissue
<b>Positive IF detected in</b>	HepG2 cells
<b>Recommended dilution:</b>	WB: 1:1000-1:10000 IF: 1:10-1:100

Application key: WB = Western blotting, IHC = Immunohistochemistry, IF = Immunofluorescence, IP = Immunoprecipitation

### Immunogen information

<b>Immunogen:</b>	Ag2736
<b>GenBank accession number:</b>	BC009710
<b>Gene ID (NCBI):</b>	9570
<b>Full name:</b>	Golgi SNAP receptor complex member 2

### Product information

<b>Purification method:</b>	Antigen affinity purification
<b>Storage:</b>	PBS with 0.1% sodium azide and 50% glycerol pH 7.3. Store at -20°C.