

KCNIP1 Polyclonal Antibody

Catalog number: 14212-1-AP

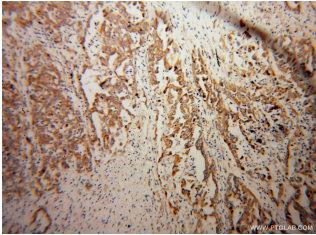
Size: 20 µg/150 µl

Source: Rabbit

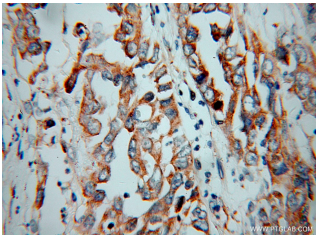
Isotype: IgG

Synonyms:

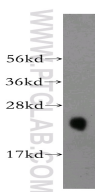
KCNIP1; KCHIP1, KCNIP1,
VABP, Vesicle APC binding
protein



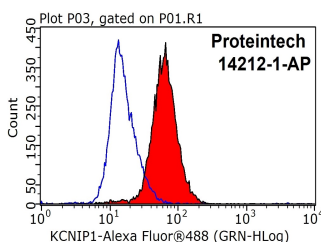
Immunohistochemical of paraffin-embedded human pancreas cancer using 14212-1-AP (KCNIP1 antibody) at dilution of 1:100 (under 10x lens)



Immunohistochemical of paraffin-embedded human pancreas cancer using 14212-1-AP (KCNIP1 antibody) at dilution of 1:100 (under 40x lens)



human cerebellum tissue were subjected to SDS PAGE followed by western blot with 14212-1-AP (KCNIP1 antibody) at dilution of 1:500



1X10⁶ HepG2 cells were stained with 0.2µg KCNIP1

Applications

Tested applications:	ELISA, WB, IHC, FC
Species specificity:	Human, Mouse, Rat; other species not tested.
Calculated KCNIP1 MW:	227aa, 27 kDa
Observed KCNIP1 MW:	25 kDa
Positive WB detected in	Human cerebellum tissue, human brain tissue
Positive IHC detected in	Human pancreas cancer tissue
Positive FC detected in	HepG2 cells
Recommended dilution:	WB: 1:500-1:5000
	IHC: 1:20-1:200
	FC: N/A

Application key: WB = Western blotting, IHC = Immunohistochemistry, IF = Immunofluorescence, IP = Immunoprecipitation

Immunogen information

Immunogen:	Ag5432
GenBank accession number:	BC050375
Gene ID (NCBI):	30820
Full name:	Kv channel interacting protein 1

Product information

Purification method:	Antigen affinity purification
Storage:	PBS with 0.02% sodium azide and 50% glycerol pH 7.3. Store at -20°C.

antibody (14212-1-AP, red)
and control antibody (blue).
Fixed with 90% MeOH
blocked with 3% BSA (30
min). Alexa Fluor 488-
conjugated AffiniPure Goat
Anti-Rabbit IgG(H+L) with
dilution 1:1000.