

TRAM2 Polyclonal Antibody

Catalog number: 13311-1-AP

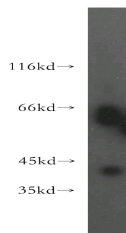
Size: 23 µg/150 µl

Source: Rabbit

Isotype: IgG

Synonyms:

TRAM2; KIAA0057



HepG2 cells were subjected to SDS PAGE followed by western blot with 13311-1-AP (TRAM2 Antibody) at dilution of 1:800

Applications

Tested applications:	ELISA, WB
Species specificity:	Human, mouse, rat; other species not tested.
Positive WB detected in:	HepG2 cells, Sp2/0 cells
Calculated TRAM2 MW:	370aa, 43kd
Observed TRAM2 MW:	43kd, 66kd
Recommended dilution:	WB: 1:200-1:2000

Application key: WB = Western blotting, IHC = Immunohistochemistry, IF = Immunofluorescence, IP = Immunoprecipitation, FC = Flow cytometry

Immunogen information

Immunogen:	Ag4144
GenBank accession number:	BC028121
Gene ID (NCBI):	9697
Full name:	Translocation associated membrane protein 2

Product information

Purification method:	Antigen affinity purification
Storage:	PBS with 0.02% sodium azide and 50% glycerol pH 7.3. Store at -20°C.