

PARD6B Polyclonal Antibody

Catalog number: 13996-1-AP

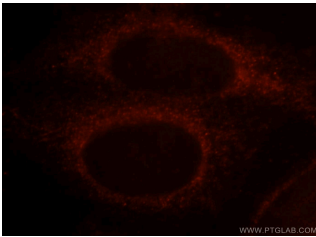
Size: 20 µg/150 µl

Source: Rabbit

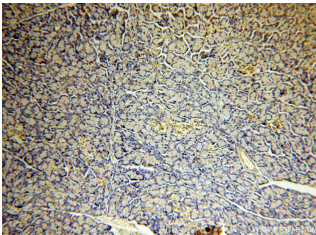
Isotype: IgG

Synonyms:

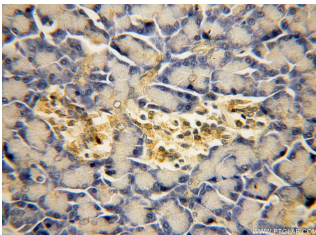
PARD6B; PAR 6 beta, PAR 6B,
PAR6B, PARD6B



Immunofluorescent analysis of HepG2 cells, using PARD6B antibody 13996-1-AP at 1:25 dilution and Rhodamine-labeled goat anti-rabbit IgG (red).



Immunohistochemical of paraffin-embedded human pancreas using 13996-1-AP(PARD6B antibody) at dilution of 1:100 (under 10x lens)



Immunohistochemical of paraffin-embedded human pancreas using 13996-1-AP(PARD6B antibody) at dilution of 1:100 (under 40x lens)

Applications

Tested applications:	ELISA, WB, IHC, IF, IP, FC
Species specificity:	Human, Mouse, Rat; other species not tested.
Calculated PARD6B MW:	41 kDa
Observed PARD6B MW:	50-53 kDa
Positive WB detected in	HeLa cells, human placenta tissue, PC-3 cells
Positive IP detected in	HEK-293 cells
Positive IHC detected in	Human pancreas tissue
Positive IF detected in	HepG2 cells, MCF-7 cells
Positive FC detected in	HepG2 cells
Recommended dilution:	WB: 1:500-1:5000
	IP: 1:200-1:1000
	IHC: 1:20-1:200
	IF: 1:10-1:100
	FC: N/A

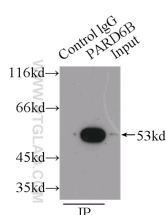
Application key: WB = Western blotting, IHC = Immunohistochemistry, IF = Immunofluorescence, IP = Immunoprecipitation

Immunogen information

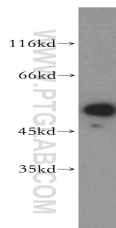
Immunogen:	Ag5083
GenBank accession number:	BC060847
Gene ID (NCBI):	84612
Full name:	Par-6 partitioning defective 6 homolog beta (C. elegans)

Product information

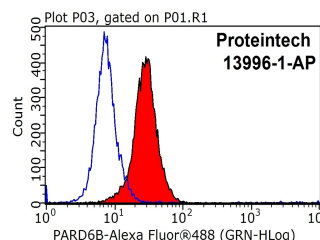
Purification method:	Antigen affinity purification
Storage:	PBS with 0.02% sodium azide and 50% glycerol pH 7.3. Store at -20°C.



IP Result of anti-PARD6B
(IP:13996-1-AP, 3ug;
Detection:13996-1-AP 1:200)



HeLa cells were subjected to
SDS PAGE followed by
western blot with 13996-1-



1X10⁶ HepG2 cells were
stained with 0.2ug PARD6B
antibody (13996-1-AP, red)

with HEK-293 cells lysate
6000ug.

AP(PARD6B antibody) at
dilution of 1:500

and control antibody (blue).
Fixed with 90% MeOH
blocked with 3% BSA (30
min). Alexa Fluor 488-
conjugated AffiniPure Goat
Anti-Rabbit IgG(H+L) with
dilution 1:1000.