

CHTF18 Polyclonal Antibody

Catalog number: 13030-1-AP

Size: 28 µg/150 µl

Source: Rabbit

Isotype: IgG

Synonyms:

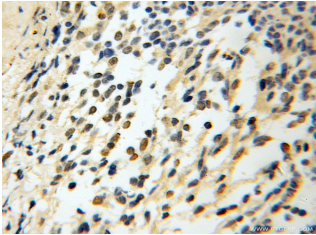
CHTF18; C16orf41; C321D2.2;

C321D2.3; C321D2.4; CHL12;

Ctf18; RUVBL



Y79 cells were subjected to SDS PAGE followed by western blot with 13030-1-AP (CHTF18 Antibody) at dilution of 1:800



Immunohistochemistry of paraffin-embedded human medulloblastoma using 13030-1-AP (CHTF18 Antibody) at Dilution 1:100 (under 10x lens)

Applications

Tested applications:	ELISA, WB, IHC
Species specificity:	Human, mouse, rat; other species not tested.
Positive WB detected in:	Y79 cells
Calculated CHTF18 MW:	1184aa, 129kd
Observed CHTF18 MW:	110kd
Positive IHC detected in:	Human medulloblastoma
Recommended dilution:	WB: 1:200-1:2000 IHC: 1:50-1:200

Application key: WB = Western blotting, IHC = Immunohistochemistry, IF = Immunofluorescence, IP = Immunoprecipitation, FC = Flow cytometry

Immunogen information

Immunogen:	Ag3672
GenBank accession number:	BC018184
Gene ID (NCBI):	63922
Full name:	CTF18, chromosome transmission fidelity factor 18 homolog (S. cerevisiae)

Product information

Purification method:	Antigen affinity purification
Storage:	PBS with 0.02% sodium azide and 50% glycerol pH 7.3. Store at -20°C.