

ZFYVE27 Polyclonal Antibody

Catalog number: 12680-1-AP

Size: 47 µg/150 µl

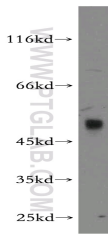
Source: Rabbit

Isotype: IgG

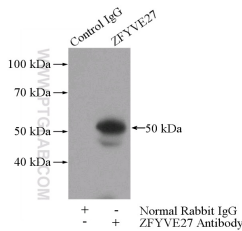
Synonyms:

ZFYVE27; PROTRUDIN, RP11

459F3.2, SPG33, ZFYVE27



mouse thymus tissue were subjected to SDS PAGE followed by western blot with 12680-1-AP(ZFYVE27 antibody) at dilution of 1:500



IP Result of anti-ZFYVE27 (IP:12680-1-AP, 3µg; Detection:12680-1-AP 1:500) with mouse testis tissue lysate 4000µg.

Background

ZFYVE27, also named as Protrudin, is a 411 amino acid protein, which contains 1 FYVE-type zinc finger. ZFYVE27 localizes in the recycling endosome membrane and functions as an upstream inhibitor of RAB11, regulating directional protein transport to the forming neurites. ZFYVE27 is a key regulator of vesicular transport during neurite extension and is involved in neuronal intracellular trafficking in the corticospinal tract.

Applications

Tested applications:	ELISA, WB, IP
Cited applications:	IF, IP, WB
Species specificity:	Human, Mouse, Rat; other species not tested.
Cited species:	Human
Calculated ZFYVE27 MW:	411aa, 46 kDa
Observed ZFYVE27 MW:	50kd
Positive WB detected in	Mouse thymus tissue, Jurkat cells, mouse brain tissue, mouse testis tissue, rat testis tissue
Positive IP detected in	Mouse testis tissue
Recommended dilution:	WB: 1:200-1:2000 IP: 1:200-1:2000

Application key: WB = Western blotting, IHC = Immunohistochemistry, IF = Immunofluorescence, IP = Immunoprecipitation

Immunogen information

Immunogen:	Ag3369
GenBank accession number:	BC030621
Gene ID (NCBI):	118813
Full name:	Zinc finger, FYVE domain containing 27

Product information

Purification method:	Antigen affinity purification
Storage:	PBS with 0.02% sodium azide and 50% glycerol pH 7.3. Store at -20°C.