

## SRPX2 Polyclonal Antibody

Catalog number: 11845-1-AP

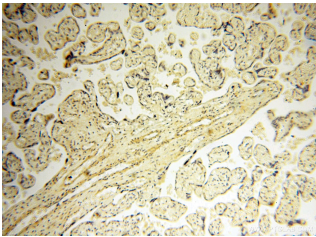
Size: 21 µg/150 µl

Source: Rabbit

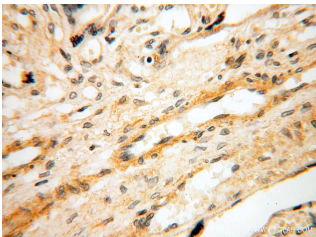
Isotype: IgG

Synonyms:

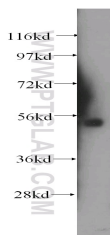
SRPX2; BPP, CBPS, PMGX,  
RESDX, SRPUL, SRPX2



Immunohistochemical of paraffin-embedded human placenta using 11845-1-AP(SRPX2 antibody) at dilution of 1:100 (under 10x lens)



Immunohistochemical of paraffin-embedded human placenta using 11845-1-AP(SRPX2 antibody) at dilution of 1:100 (under 40x lens)



human placenta tissue were subjected to SDS PAGE followed by western blot with 11845-1-AP(SRPX2 antibody) at dilution of 1:500

### Background

SRPX2 (sushi-repeat-containing protein, X-linked 2) is a secreted protein expressed in neurons of the human adult brain, including the rolandic area (PMID: 20874700). Firstly described as sushi-repeat protein up-regulated in leukemia (SRPUL) in leukemia cells with dysregulated expression at the transcriptional level, SRPX2 has been recently shown as a multifunctional protein. SRPX2 is a ligand for uPAR, the urokinase-type plasminogen activator (uPA) receptor (PMID: 18718938). It is involved in seizure disorders, angiogenesis and cellular adhesion (PMID: 22242148; 19667118; 16497722). The involvement of SRPX2 in disorders of language cortex and cognition suggests it has an important role in the perisylvian region critical for language and cognitive development (PMID: 16497722).

### Applications

Tested applications:	ELISA, WB, IHC
Cited applications:	WB
Species specificity:	Human, Mouse, Rat; other species not tested.
Cited species:	Human, mouse
Calculated SRPX2 MW:	465aa, 53kd
Observed SRPX2 MW:	53kd
Positive WB detected in	Human placenta tissue, HepG2 cells, human brain tissue, human kidney tissue, Transfected HEK-293 cells
Positive IHC detected in	Human placenta tissue, human brain tissue, human heart tissue, human kidney tissue, human lung tissue, human skin tissue, human spleen tissue
Recommended dilution:	WB: 1:500-1:5000 IHC: 1:20-1:200

Application key: WB = Western blotting, IHC = Immunohistochemistry, IF = Immunofluorescence, IP = Immunoprecipitation

### Immunogen information

Immunogen:	Ag2516
GenBank accession number:	BC020733
Gene ID (NCBI):	27286
Full name:	Sushi-repeat-containing protein, X-linked 2

### Product information

Purification method:	Antigen affinity purification
Storage:	PBS with 0.1% sodium azide and 50% glycerol pH 7.3. Store at -20°C.