

GGA2 Polyclonal Antibody

Catalog number: 10356-1-AP

Size: 20 µg/150 µl

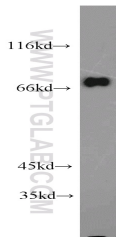
Source: Rabbit

Isotype: IgG

Synonyms:

GGA2; FLJ20966, GGA2,

KIAA1080, VEAR



mouse brain tissue were subjected to SDS PAGE followed by western blot with 10356-1-AP(GGA2 antibody) at dilution of 1:1000

Applications

Tested applications:	ELISA, WB, IF
Species specificity:	Human,Mouse,Rat; other species not tested.
Calculated GGA2 MW:	67 kDa
Observed GGA2 MW:	67 kDa
Positive WB detected in	Mouse brain tissue, human kidney tissue, human liver tissue
Positive IF detected in	HepG2 cells
Recommended dilution:	WB: 1:500-1:5000 IF: 1:10-1:100

Application key: WB = Western blotting, IHC = Immunohistochemistry, IF = Immunofluorescence, IP = Immunoprecipitation

Immunogen information

Immunogen:	Ag0370
GenBank accession number:	BC000284
Gene ID (NCBI):	23062
Full name:	Golgi associated, gamma adaptin ear containing, ARF binding protein 2

Product information

Purification method:	Antigen affinity purification
Storage:	PBS with 0.1% sodium azide and 50% glycerol pH 7.3. Store at -20°C.