

Galectin 4 Polyclonal Antibody

Catalog number: 13391-1-AP

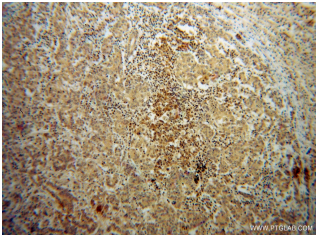
Size: 55 µg/150 µl

Source: Rabbit

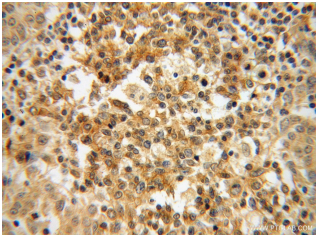
Isotype: IgG

Synonyms:

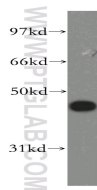
LGALS4; Antigen NY CO 27, Gal 4, GAL4, Galectin 4, L 36 lactose binding protein, L36LBP, Lactose binding lectin 4, LGALS4



Immunohistochemical of paraffin-embedded human breast cancer using 13391-1-AP(LGALS4,GAL4 antibody) at dilution of 1:50 (under 10x lens)



Immunohistochemical of paraffin-embedded human breast cancer using 13391-1-AP(LGALS4,GAL4 antibody) at dilution of 1:50 (under 40x lens)



Jurkat cells were subjected to SDS PAGE followed by western blot with 13391-1-AP(LGALS4,GAL4 antibody) at dilution of 1:400

Applications

Tested applications:	ELISA, WB, IHC, FC
Species specificity:	Human,Mouse,Rat; other species not tested.
Calculated Galectin 4 MW:	323aa,38 kDa
Observed Galectin 4 MW:	38kd
Positive WB detected in	Jurkat cells, COLO 320 cells
Positive IHC detected in	Human breast cancer tissue
Positive FC detected in	MCF-7 cells
Recommended dilution:	WB: 1:200-1:2000
	IHC: 1:20-1:200
	FC: N/A

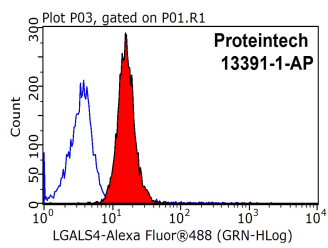
Application key: WB = Western blotting, IHC= Immunohistochemistry, IF = Immunofluorescence, IP = Immunoprecipitation

Immunogen information

Immunogen:	Ag4049
GenBank accession number:	BC034750
Gene ID (NCBI):	3960
Full name:	Lectin, galactoside-binding, soluble, 4

Product information

Purification method:	Antigen affinity purification
Storage:	PBS with 0.02% sodium azide and 50% glycerol pH 7.3. Store at -20°C.



1X10⁶ MCF-7 cells were stained with 0.2ug LGALS4,GAL4 antibody (13391-1-AP, red) and control antibody (blue). Fixed with 90% MeOH blocked with 3% BSA (30 min). Alexa Fluor 488-conjugated AffiniPure Goat Anti-Rabbit IgG(H+L) with dilution 1:1500.