

PKC gamma Polyclonal Antibody

Catalog number: 14364-1-AP

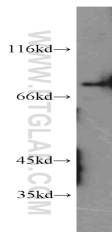
Size: 38 µg/150 µl

Source: Rabbit

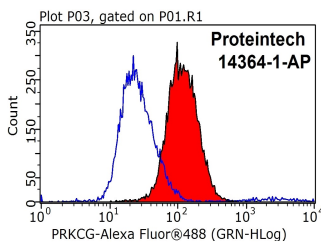
Isotype: IgG

Synonyms:

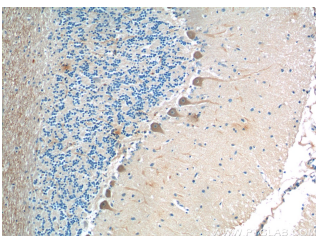
PRKCG; PKC gamma, PKCC,
PKCG, PRKCG, Protein kinase C,
gamma type, protein kinase C,
gamma, SCA14



human brain tissue were subjected to SDS PAGE followed by western blot with 14364-1-AP (PRKCG antibody) at dilution of 1:1000



1X10⁶ HeLa cells were stained with 1µg PRKCG antibody (14364-1-AP, red) and control antibody (blue). Fixed with 90% MeOH blocked with 3% BSA (30 min). Alexa Fluor 488-conjugated AffiniPure Goat Anti-Rabbit IgG(H+L) with dilution 1:1000.



Immunohistochemistry of paraffin-embedded human cerebellum tissue slide using 14364-1-AP (PRKCG Antibody) at dilution of 1:200 (under 10x lens).

Background

Protein kinase C (PKC) is a family of serine- and threonine-specific protein kinases that can be activated by calcium and second messenger diacylglycerol. PKC family members phosphorylate a wide variety of protein targets and are known to be involved in diverse cellular signaling pathways. PKC gamma is a neuron-specific member of the classical PKCs and is activated and translocated to subcellular regions as a result of various stimuli, including diacylglycerol synthesis, increased intracellular Ca²⁺ and phorbol esters. Defects in this protein have been associated with spinocerebellar ataxia type 14 (SCA14), an autosomal dominant neurodegenerative disease.

Applications

Tested applications:	ELISA, WB, FC, IP, IHC
Species specificity:	Human, Mouse, Rat; other species not tested.
Calculated PKC gamma MW:	78 kDa
Observed PKC gamma MW:	76-80 kDa
Positive WB detected in	Human brain tissue
Positive IP detected in	Mouse brain tissue
Positive IHC detected in	Human cerebellum tissue, human gliomas tissue, rat brain tissue
Positive FC detected in	HeLa cells
Recommended dilution:	WB: 1:500-1:5000 IP: 1:200-1:2000 IHC: 1:20-1:200 FC: N/A

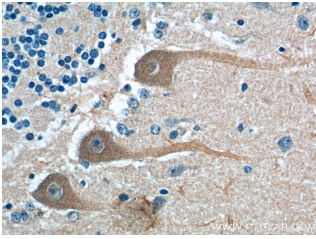
Application key: WB = Western blotting, IHC = Immunohistochemistry, IF = Immunofluorescence, IP = Immunoprecipitation

Immunogen information

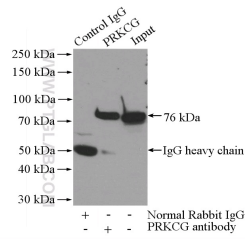
Immunogen:	Ag5681
GenBank accession number:	BC047876
Gene ID (NCBI):	5582
Full name:	Protein kinase C, gamma

Product information

Purification method:	Antigen affinity purification
Storage:	PBS with 0.02% sodium azide and 50% glycerol pH 7.3. Store at -20°C.



Immunohistochemistry of paraffin-embedded human cerebellum tissue slide using 14364-1-AP(PRKCG Antibody) at dilution of 1:200 (under 40x lens).



IP Result of anti-PRKCG (IP:14364-1-AP, 4ug; Detection:14364-1-AP 1:500) with mouse brain tissue lysate 2640ug.