

RABGEF1 Polyclonal Antibody

Catalog number: 12735-1-AP

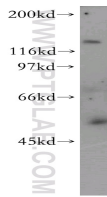
Size: 20 µg/150 µl

Source: Rabbit

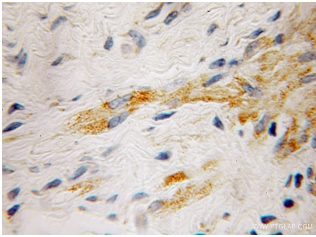
Isotype: IgG

Synonyms:

RABGEF1; FLJ32302; RABEX5;
rabex-5



PC-3 cells were subjected to SDS PAGE followed by western blot with 12735-1-AP(RABGEF1 Antibody) at dilution of 1:600



Immunohistochemistry of paraffin-embedded human endometrial cancer using 12735-1-AP(RABGEF1 Antibody) at Dilution 1:100 (under 10x lens)

Applications

Tested applications:	ELISA, WB, IHC
Species specificity:	Human, mouse, rat; other species not tested.
Positive WB detected in:	PC-3 cells, human brain tissue
Calculated RABGEF1 MW:	79kd or 57kd
Observed RABGEF1 MW:	57kd
Positive IHC detected in:	Human endometrial cancer
Recommended dilution:	WB: 1:200-1:2000 IHC: 1:50-1:200

Application key: WB = Western blotting, IHC = Immunohistochemistry, IF = Immunofluorescence, IP = Immunoprecipitation, FC = Flow cytometry

Immunogen information

Immunogen:	Ag3442
GenBank accession number:	BC015330
Gene ID (NCBI):	27342
Full name:	RAB guanine nucleotide exchange factor (GEF) 1

Product information

Purification method:	Antigen affinity purification
Storage:	PBS with 0.1% sodium azide and 50% glycerol pH 7.3. Store at -20°C.