



LABCONCO CORPORATION 8811 Prospect Ave, Kansas City, MO 64132
(816) 333-8811 or (800) 821-5525 • (816) 363-0130 fax • labconco.com

Labconco Short Stainless Chamber 7555200

Installation of Short Stainless Chamber on Benchtop Freeze Dryer

Place the collector chamber lid onto the collar (Figure 1). **For an acrylic lid**, place two gaskets and the drying chamber onto the top side of the collector chamber lid. **For a stainless steel lid**, place a gasket, plastic spacer, gasket, and drying chamber onto the top side of the collector chamber lid. Place the stainless steel spacer onto the collar inside the drying chamber. Insert the latch pin in a similar fashion to that shown in figures 3 & 4 (page 2).

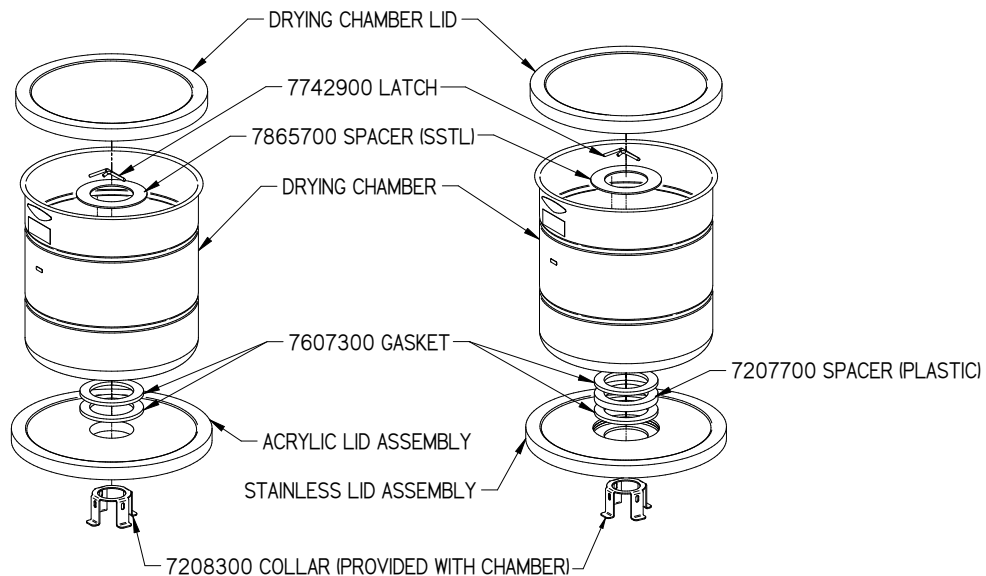


Figure 1

Installation of Short Stainless Chamber on Console Freeze Dryer

1. Place the rubber gasket, drying chamber, and spacer on the connection port of the base unit as shown in Figure 2. The collar (7208300), shown in Figure 1, is not used with the connection port.

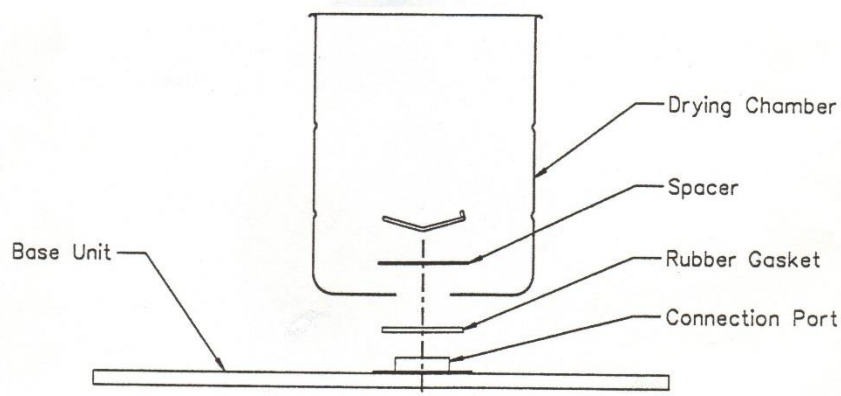


Figure 2

Latch Pin Installation for Short Stainless Chamber

1. Insert the latch pin into the holes in the connection port with the angle of the pin pointing down as shown in Figure 3.

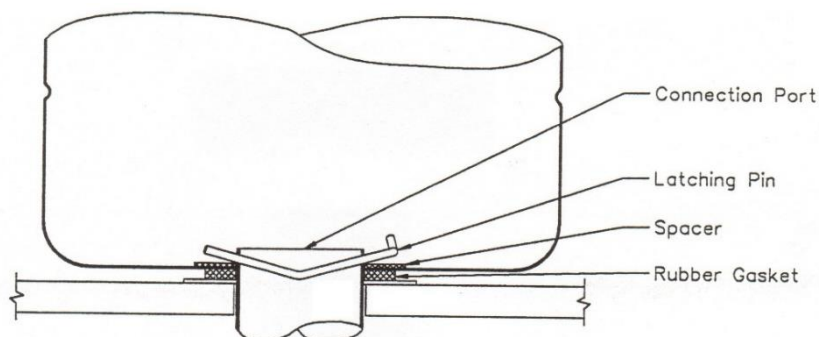


Figure 3

2. Rotate the latch pin 180° as shown in Figure 4. The rotated pin secures the drying chamber to the base unit and compresses the rubber gasket to provide a leak tight vacuum seal.

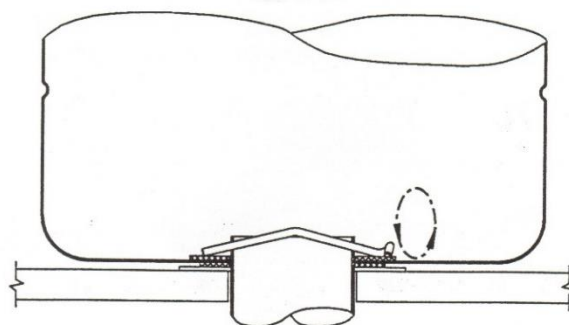


Figure 4

Notes:

- Always vent the vacuum line before turning off the vacuum pump.
- Make sure all vacuum lines are secured to prevent leaks.
- Wear appropriate protective attire and eye protection.
- Clean stainless steel condenser after use.
- Do not work with damaged, scratched, or chipped glassware.

Troubleshooting:

If the Freeze Dry system does not obtain a satisfactory vacuum, refer to the user's manual that was supplied with the Freeze Dry system. Vacuum problems concerning the drying chamber may be resolved by performing the following procedure.

1. Inspect the gasket under the chamber for cracks or defects. Ensure the gasket is clean. Apply a thin coat of vacuum grease to the gasket. Keep in mind too much vacuum grease can cause leaks.