

LTA4H Polyclonal Antibody

Catalog number: 13662-1-AP

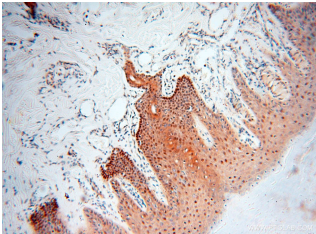
Size: 20 µg/150 µl

Source: Rabbit

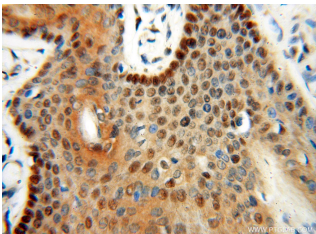
Isotype: IgG

Synonyms:

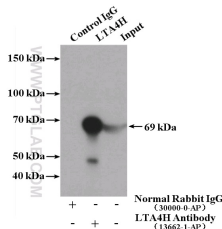
LTA4H; Leukotriene A 4
hydrolase, Leukotriene A(4)
hydrolase, leukotriene A4
hydrolase, LTA 4 hydrolase,
LTA4, LTA4H



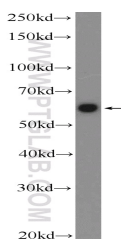
Immunohistochemical of paraffin-embedded human skin using 13662-1-AP(LTA4H antibody) at dilution of 1:100 (under 10x lens)



Immunohistochemical of paraffin-embedded human skin using 13662-1-AP(LTA4H antibody) at dilution of 1:100 (under 40x lens)



IP Result of anti-LTA4H (IP:13662-1-AP, 4µg; Detection:13662-1-AP 1:500) with HEK-293 cells lysate 1120µg.



HEK-293 cells were subjected

Background

LTA4H(Leukotriene A-4 hydrolase) is also named as LTA4 and belongs to the peptidase M1 family. It is essential for the conversion of LTA4 to LTB4, an inflammatory lipid mediator(PMID:10601658). LTA4H also possesses aminopeptidase activity that it can degrade PGP, which is a biomarker for chronic obstructive pulmonary disease and is implicated in neutrophil persistence in the lung(PMID:20813919). This protein has 4 isoforms produced by alternative splicing with the MW of 69, 59, 57, 67 kDa.

Applications

Tested applications:	ELISA, IHC, WB, IP
Species specificity:	Human, Mouse, Rat; other species not tested.
Calculated LTA4H MW:	611aa, 69 kDa
Observed LTA4H MW:	57-70 kDa
Positive WB detected in	HEK-293 cells, Jurkat cells
Positive IP detected in	HEK-293 cells
Positive IHC detected in	Human skin tissue, human brain tissue, human heart tissue, human kidney tissue, human lung tissue, human ovary tissue, human placenta tissue, human spleen tissue, human testis tissue
Recommended dilution:	WB: 1:500-1:5000 IP: 1:200-1:2000 IHC: 1:20-1:200

Application key: WB = Western blotting, IHC = Immunohistochemistry, IF = Immunofluorescence, IP = Immunoprecipitation

Immunogen information

Immunogen:	Ag4568
GenBank accession number:	BC032528
Gene ID (NCBI):	4048
Full name:	Leukotriene A4 hydrolase

Product information

Purification method:	Antigen affinity purification
Storage:	PBS with 0.02% sodium azide and 50% glycerol pH 7.3. Store at -20°C.

to SDS PAGE followed by
western blot with 13662-1-
AP(LTA4H Antibody) at
dilution of 1:1000