

SAT1 Polyclonal Antibody

Catalog number: 10708-1-AP

Size: 26 µg/150 µl

Source: Rabbit

Isotype: IgG

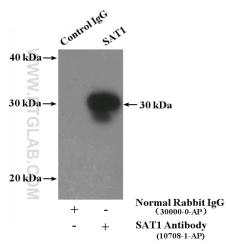
Synonyms:

SAT1; DC21, Diamine

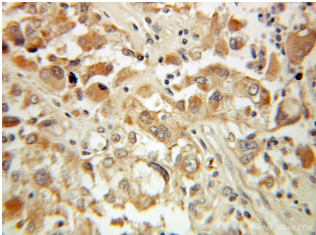
acetyltransferase 1, KFSD,

Putrescine acetyltransferase,

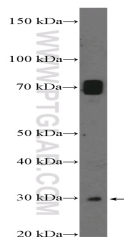
SAT, SAT1, SSAT, SSAT 1



IP Result of anti-SAT1 (IP:10708-1-AP, 4µg; Detection:10708-1-AP 1:300) with mouse liver tissue lysate 4000µg.



Immunohistochemical of paraffin-embedded human ovary tumor using 10708-1-AP(SAT1 antibody) at dilution of 1:100 (under 10x lens)



mouse liver tissue were subjected to SDS PAGE followed by western blot with 10708-1-AP(SAT1 Antibody) at dilution of 1:300

Applications

Tested applications:	ELISA, IHC, WB, IP
Cited applications:	IHC, WB
Species specificity:	Human, Mouse, Rat; other species not tested.
Cited species:	Human, mouse
Calculated SAT1 MW:	20 kDa
Observed SAT1 MW:	25-30
Positive WB detected in	Mouse liver tissue
Positive IP detected in	Mouse liver tissue
Positive IHC detected in	Human ovary tumor tissue
Recommended dilution:	WB: 1:200-1:1000 IP: 1:200-1:1000 IHC: 1:20-1:200

Application key: WB = Western blotting, IHC = Immunohistochemistry, IF = Immunofluorescence, IP = Immunoprecipitation

Immunogen information

Immunogen:	Ag1154
GenBank accession number:	BC008424
Gene ID (NCBI):	6303
Full name:	Spermidine/spermine N1-acetyltransferase 1

Product information

Purification method:	Antigen affinity purification
Storage:	PBS with 0.1% sodium azide and 50% glycerol pH 7.3. Store at -20°C.