

ARHGEF5 Polyclonal Antibody

Catalog number: 11379-1-AP

Size: 45 µg/150 µl

Source: Rabbit

Isotype: IgG

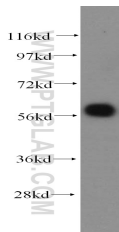
Synonyms:

ARHGEF5; ARHGEF5,

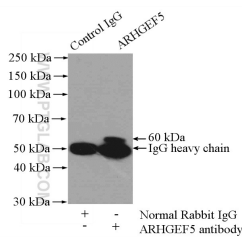
DKFZp686N1969, GEF5,

Oncogene TIM, P60, p60 TIM,

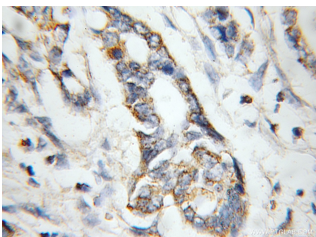
TIM, TIM1



MCF7 cells were subjected to SDS PAGE followed by western blot with 11379-1-AP (ARHGEF5 antibody) at dilution of 1:500



IP Result of anti-ARHGEF5 (IP:11379-1-AP, 4µg; Detection:11379-1-AP 1:500) with mouse kidney tissue lysate 4000µg.



Immunohistochemical of paraffin-embedded human pancreas cancer using 11379-1-AP (ARHGEF5 antibody) at dilution of 1:50 (under 10x lens)

Applications

Tested applications:	ELISA, WB, IHC, IP
Cited applications:	IF, IHC, WB
Species specificity:	Human, Mouse, Rat; other species not tested.
Cited species:	Human, mouse
Calculated ARHGEF5 MW:	177 kDa
Observed ARHGEF5 MW:	60 kDa
Positive WB detected in	MCF7 cells, HeLa cells, human kidney tissue, human liver tissue, mouse kidney tissue, rat kidney tissue
Positive IP detected in	Mouse kidney tissue
Positive IHC detected in	Human pancreas cancer tissue
Recommended dilution:	WB: 1:1000-1:10000 IP: 1:200-1:2000 IHC: 1:20-1:200

Application key: WB = Western blotting, IHC = Immunohistochemistry, IF = Immunofluorescence, IP = Immunoprecipitation

Immunogen information

Immunogen:	Ag1892
GenBank accession number:	BC010046
Gene ID (NCBI):	7984
Full name:	Rho guanine nucleotide exchange factor (GEF) 5

Product information

Purification method:	Antigen affinity purification
Storage:	PBS with 0.1% sodium azide and 50% glycerol pH 7.3. Store at -20°C.