

SPRR3 Polyclonal Antibody

Catalog number: 11742-1-AP

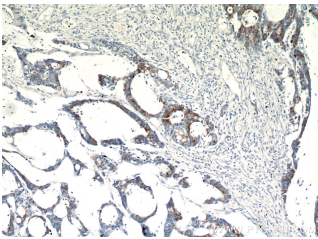
Size: 26 µg/150 µl

Source: Rabbit

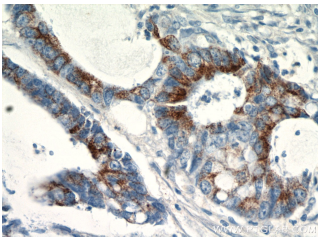
Isotype: IgG

Synonyms:

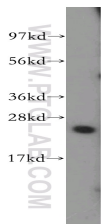
SPRR3; 22 kDa pancornulin,
Cornifin beta, Esophagin, small
proline rich protein 3, SPRC,
SPRR3



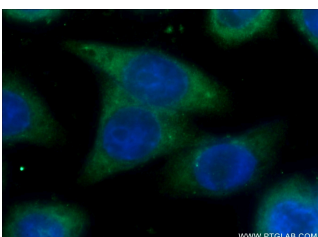
Immunohistochemical of paraffin-embedded human colon cancer using 11742-1-AP (SPRR3 antibody) at dilution of 1:100 (under 10x lens)



Immunohistochemical of paraffin-embedded human colon cancer using 11742-1-AP (SPRR3 antibody) at dilution of 1:100 (under 40x lens)



HeLa cells were subjected to SDS PAGE followed by western blot with 11742-1-AP (SPRR3 antibody) at dilution of 1:400



Immunofluorescent analysis

Background

SPRR3, also named as Esophagin, Cornifin beta and SPRC, belongs to the cornifin (SPRR) family. It is cross-linked envelope protein of keratinocytes. Increased expression of SPRR3 appears to be involved in colorectal tumorigenesis. SPRR3 is a marker for terminal squamous cell differentiation. a potential novel therapeutic target for less advanced stages of Breast Cancer.

Applications

Tested applications:	ELISA, WB, IHC, IP, IF
Cited applications:	IHC, WB
Species specificity:	Human; other species not tested.
Cited species:	Human
Calculated SPRR3 MW:	19 kDa
Observed SPRR3 MW:	22-25 kDa
Positive WB detected in	HeLa cells, human liver tissue
Positive IP detected in	COLO 320 cells
Positive IHC detected in	Human colon cancer tissue, human breast cancer tissue
Positive IF detected in	HeLa cells
Recommended dilution:	WB: 1:500-1:5000
	IP: 1:200-1:2000
	IHC: 1:20-1:200
	IF: 1:20-1:200

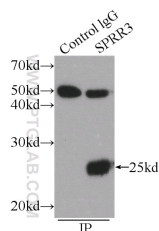
Application key: WB = Western blotting, IHC = Immunohistochemistry, IF = Immunofluorescence, IP = Immunoprecipitation

Immunogen information

Immunogen:	Ag2337
GenBank accession number:	BC017802
Gene ID (NCBI):	6707
Full name:	Small proline-rich protein 3

Product information

Purification method:	Antigen affinity purification
Storage:	PBS with 0.1% sodium azide and 50% glycerol pH 7.3. Store at -20°C.



IP Result of anti-SPRR3

of HeLa cells using 11742-1-
AP(SPRR3 Antibody) at
dilution of 1:50 and Alexa
Fluor 488-conjugated
AffiniPure Goat Anti-Rabbit
IgG(H+L)

(IP:11742-1-AP, 3ug;
Detection:11742-1-AP 1:500)
with COLO 320 cells lysate
1720ug.