

RPGRIP1 Polyclonal Antibody

Catalog number: 13214-1-AP

Size: 62 µg/150 µl

Source: Rabbit

Isotype: IgG

Synonyms:

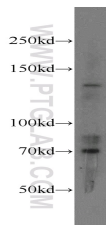
RPGRIP1; **CORD9**,

DKFZp686P0897, **LCA6**, **RGI1**,

RGRIP, **RPGR interacting**

protein 1, **RPGRIP**, **RPGRIP1**,

RPGRIP1d



HEK-293 cells were subjected to SDS PAGE followed by western blot with 13214-1-AP (RPGRIP1 antibody) at dilution of 1:400

Background

RPGRIP1 is a photoreceptor protein that interacts with retinitis pigmentosa GTPase regulator protein and is a key component of cone and rod photoreceptor cells. The biological functions of RPGRIP1 are complex. Mutations in this gene lead to autosomal recessive congenital blindness. In the eye, it is expressed in amacrine neurons and photoreceptors, and in numerous other tissues, albeit at greatly reduced levels. Moreover, it exists multiple isoforms with species-specific subcellular localization patterns, and the different isoforms perform cell-specific functions. Within photoreceptors, RPGRIP1 localizes predominantly to outer segments (OS) of rods and cones in humans, whereas in bovine eyes, it is found only in rod OS. In contrast, in mice, RPGRIP1 is found primarily in connecting cilia (CC), where it localizes between the ciliary axoneme and the plasma membrane. RPGRIP1 has multiple isoforms with MW 147kDa, 70-76kDa, 103kDa and 66kDa.

Applications

Tested applications:	ELISA, WB
Species specificity:	Human; other species not tested.
Calculated RPGRIP1 MW:	147 kDa
Observed RPGRIP1 MW:	70 kDa, 140-150 kDa
Positive WB detected in	HEK-293 cells
Recommended dilution:	WB: 1:500-1:5000

Application key: WB = Western blotting, IHC = Immunohistochemistry, IF = Immunofluorescence, IP = Immunoprecipitation

Immunogen information

Immunogen:	Ag4089
GenBank accession number:	BC039089
Gene ID (NCBI):	57096
Full name:	Retinitis pigmentosa GTPase regulator interacting protein 1

Product information

Purification method:	Antigen affinity purification
Storage:	PBS with 0.02% sodium azide and 50% glycerol pH 7.3. Store at -20°C.