

CCDC28B Polyclonal Antibody

Catalog number: 11530-1-AP

Size: 22 µg/150 µl

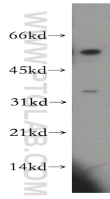
Source: Rabbit

Isotype: IgG

Synonyms:

CCDC28B; CCDC28B, RP4

622L5.5



human skeletal muscle tissue were subjected to SDS PAGE followed by western blot with 11530-1-AP(CCDC28B antibody) at dilution of 1:300

Applications

Tested applications:	ELISA, WB
Species specificity:	Human,Mouse,Rat; other species not tested.
Calculated CCDC28B MW:	200aa,22 kDa
Observed CCDC28B MW:	30-35 kDa
Positive WB detected in	Human skeletal muscle tissue, human brain tissue
Recommended dilution:	WB: 1:500-1:5000

Application key: WB = Western blotting, IHC = Immunohistochemistry, IF = Immunofluorescence, IP = Immunoprecipitation

Immunogen information

Immunogen:	Ag2105
GenBank accession number:	BC022848
Gene ID (NCBI):	79140
Full name:	Coiled-coil domain containing 28B

Product information

Purification method:	Antigen affinity purification
Storage:	PBS with 0.1% sodium azide and 50% glycerol pH 7.3. Store at -20°C.