

## ADAP2 Polyclonal Antibody

Catalog number: 13706-1-AP

Size: 20 µg/150 µl

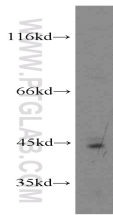
Source: Rabbit

Isotype: IgG

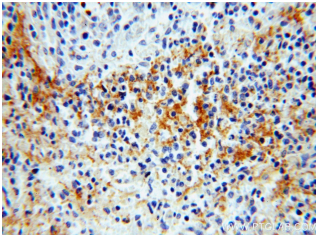
Synonyms:

ADAP2; CENTA2; HSA272195;

cent-b



human placenta tissue were subjected to SDS PAGE followed by western blot with 13706-1-AP(ADAP2 Antibody) at dilution of 1:300



Immunohistochemistry of paraffin-embedded human spleen using 13706-1-AP(ADAP2 Antibody) at Dilution 1:50 (under 40x lens)

### Applications

Tested applications:	ELISA, WB, IHC
Species specificity:	Human, mouse, rat; other species not tested.
Positive WB detected in:	Human placenta tissue
Calculated ADAP2 MW:	380aa,44kd
Observed ADAP2 MW:	44kd
Positive IHC detected in:	Human spleen
Recommended dilution:	WB: 1:200-1:1000 IHC: 1:20-1:200

Application key: WB = Western blotting, IHC = Immunohistochemistry, IF = Immunofluorescence, IP = Immunoprecipitation, FC = Flow cytometry

### Immunogen information

Immunogen:	Ag4641
GenBank accession number:	BC033758
Gene ID (NCBI):	55803
Full name:	ArfGAP with dual PH domains 2

### Product information

Purification method:	Antigen affinity purification
Storage:	PBS with 0.02% sodium azide and 50% glycerol pH 7.3. Store at -20°C.