

MEF2C Polyclonal Antibody

Catalog number: 10056-1-AP

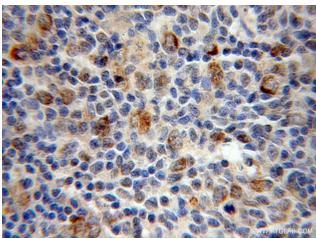
Size: 20 µg/150 µl

Source: Rabbit

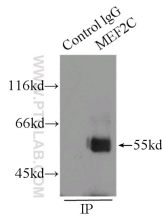
Isotype: IgG

Synonyms:

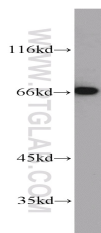
MEF2C; MEF2C, myocyte enhancer factor 2C



Immunohistochemical of paraffin-embedded human lymphoma using 10056-1-AP (MEF2C antibody) at dilution of 1:50 (under 40x lens)



IP Result of anti-MEF2C (IP:10056-1-AP, 3µg; Detection:10056-1-AP 1:500) with SH-SY5Y cells lysate 2000µg.



SH-SY5Y cells were subjected to SDS PAGE followed by western blot with 10056-1-AP (MEF2C antibody) at dilution of 1:500

Background

MEF2C belongs to the MEF2 family. It is a transcription activator which binds specifically to the MEF2 element present in the regulatory regions of many muscle-specific genes. MEF2C controls cardiac morphogenesis and myogenesis, and is also involved in vascular development [PMID: 20221419]. It plays an essential role in hippocampal-dependent learning and memory by suppressing the number of excitatory synapses and thus regulating basal and evoked synaptic transmission [PMID: 18599438]. It is crucial for normal neuronal development, distribution, and electrical activity in the neocortex and is necessary for proper development of megakaryocytes and platelets and for bone marrow B lymphopoiesis [PMID: 21666133]. This protein is required for B-cell survival and proliferation in response to BCR stimulation, efficient IgG1 antibody responses to T-cell-dependent antigens and for normal induction of germinal center B cells. It may also be involved in neurogenesis and in the development of cortical architecture.

Read more about this antibody on the

blog: <http://blog.ptglab.com/index.php/mef2c-antibody-features-in-nature-biotechnology/>

Applications

Tested applications:

ELISA, WB, IHC, IP, IF

Cited applications:

IF, IHC, WB

Species specificity:

Human, Mouse, Rat; other species not tested.

Cited species:

Human, mouse, rat

Calculated MEF2C MW:

63 kDa

Observed MEF2C MW:

52 kDa; 63 kDa

Positive WB detected in

SH-SY5Y cells, mouse colon tissue

Positive IP detected in

SH-SY5Y cells

Positive IHC detected in

Human lymphoma tissue

Positive IF detected in

HepG2 cells

Recommended dilution:

WB: 1:200-1:2000

IP: 1:200-1:2000

IHC: 1:20-1:200

IF: 1:20-1:200

Application key: WB = Western blotting, IHC = Immunohistochemistry, IF = Immunofluorescence, IP = Immunoprecipitation

Immunogen information

Immunogen:

Ag0020

GenBank accession number:

BC156603

Gene ID (NCBI):

4208

Full name:

Myocyte enhancer factor 2C

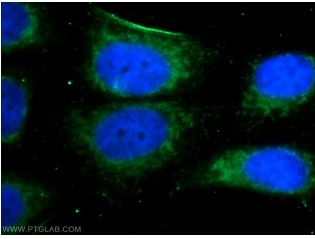
Product information

Purification method:

Antigen affinity purification

Storage:

PBS with 0.1% sodium azide and 50% glycerol pH 7.3. Store at -20°C.



**Immunofluorescent analysis
of HepG2 cells using 10056-1-
AP(MEF2C Antibody) at
dilution of 1:50 and Alexa
Fluor 488-conjugated
AffiniPure Goat Anti-Rabbit
IgG(H+L)**